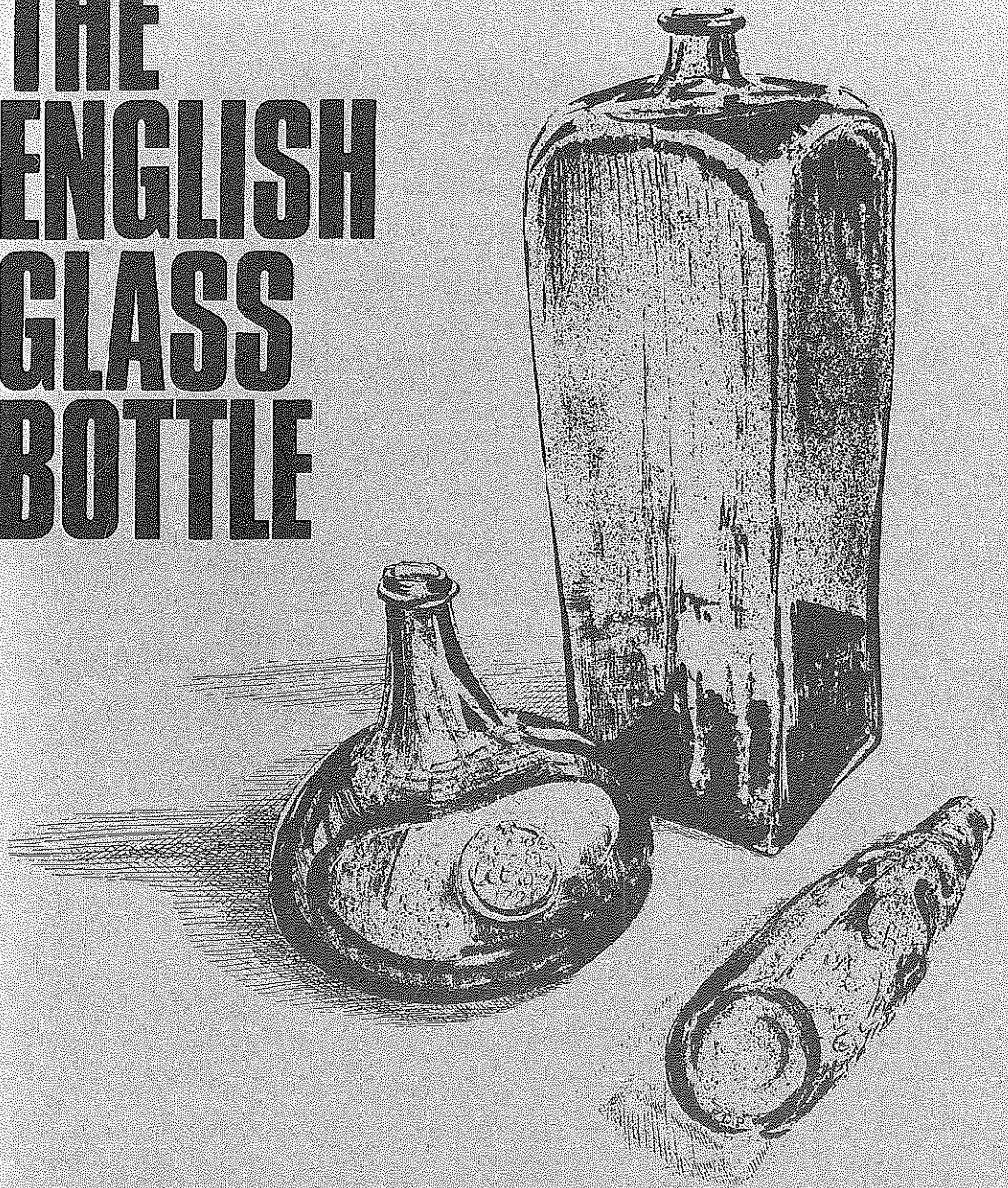


# THE ENGLISH GLASS BOTTLE



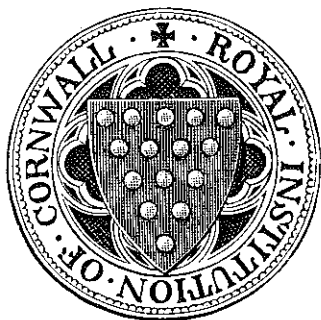
**AN EXHIBITION at the  
COUNTY MUSEUM, TRURO  
1st JULY to 30th SEPTEMBER 1976**

# THE ENGLISH GLASS BOTTLE THROUGH THE AGES

*Illustrated Descriptive Catalogue*

THE COUNTY MUSEUM  
TRURO, CORNWALL.

1st JULY to 30th SEPTEMBER, 1976



## FOREWORD

This Exhibition, *The English Glass Bottle through the Ages*, is a new venture for the Royal Institution of Cornwall, since although the Institution frequently houses exhibitions sponsored by others, this is the first time for many years that we have ourselves organised a major exhibition.

The collection and study of bottles is a relatively new interest, but one that is rapidly growing in Cornwall and elsewhere. Our Exhibition, although containing many items from Cornwall and the Westcountry, aims to cover the whole of England, and itself marks an important stage in this study. This catalogue, as well as providing a guide to and record of the exhibition, will be of lasting value as a work of scholarship.

On behalf of the Institution I thank all who have lent exhibits, for their kindness and generosity. Special thanks are also due to our Council Member, Cyril Staal, otherwise known under his pen-name of Geoffrey Wills, who first suggested the exhibition and who has played a leading part in planning it and writing this catalogue; to our Curator, Leslie Douch, who has shared these tasks and upon whom a heavy extra burden has thus fallen; to our Assistant Curator, Roger Penhallurick, for his admirable illustrations to the catalogue; to our Assistant Librarian, Angela Broome, who has helped in the identification of the owners of the 'Cornish' seal-bottles; and to Heather Phillips who has helped to arrange the exhibits.

P.A.S. POOL

President

## INTRODUCTION

Glass is composed of silica, usually in the form of sand or small pebbles, mixed with an alkali; the latter acting as a flux in assisting the silica to melt. The alkali takes the form of soda or potash, the former at one time obtained from the ash of certain marine plants, and the potash from the ashes of burned beechwood and bracken. Traces of iron in the silica gave such glass a green tint, and the deliberate addition of metallic oxides resulted in the production of a range of colours. More sophisticated mixtures were, and are, used for making clear 'crystal' or 'flint' glass.

A recipe for bottles printed in the 1758 edition of James Dossie's *Handmaid to the Arts* was:

Take of wood ashes two hundred pounds, and of sand one hundred pounds. Mix them thoroughly well by grinding them.

By the early nineteenth century it was common to make bottles from a mixture of silica, soda and lime, the latter not only being a flux but improving the properties of the finished article.

Hollow glass vessels were first made by the ancient Egyptians. They constructed them laboriously by winding a strip of semi-molten glass round a shaped clay core, the latter then being chipped away. The resulting vessels were small in size, and examples, often made from threads of differently coloured glasses, must have been considerably more decorative than useful.

In about the first century B.C. came the discovery that a lump of molten glass on the end of an iron tube could be blown into a bubble. It thenceforward became possible to make hollow containers of a size limited only by the strength of the blower's lungs. Such vessels could be shaped by being blown into a prepared mould, and by this means some were given an imprint of the maker's name. It was not until the Industrial Revolution that changes in manufacturing methods began to take place. Until that time, the process was as follows.

First, the body of the vessel was blown from a lump of glass gathered from the furnace at the end of the blowing-iron, the neck

being drawn out and shaped with the aid of a pair of tongs (the *procellas* or tool). Then an assistant held an iron rod (the *pontil* or *punty*), with a small lump of molten glass on it, against the end of the bottle away from the blowing-iron. It was then possible to break away the blowing-iron leaving the half-finished bottle held by the *pontil*, and the worker was able to finish the rim. The *pontil* was removed and the scar it left pushed upwards into the interior of the bottle, so that the latter rested steadily and it did not scratch the surface on which it stood. Finally, the bottle was carried to the annealing over (*leer*), in which it cooled very slowly in order to remove stresses set up in the material during manufacture. If this was not done, the vessel was liable to prove unstable and might fracture without warning.

An early refinement was the patenting of a foot-operated mould by Henry Ricketts of Bristol in 1822, which ensured the production of wine bottles of a uniform appearance. Later, in 1857, a spring-loaded grip (the *snap*) began to replace the *pontil*. The *snap* left no mark beneath the bottle, but the custom of forming the base with an indent continued in use.

At first, bottles were free-blown, so that each relied for its shape and size on the eye of the maker. Later, with the adoption of a cylindrical shape, a simple tubular mould imposed a measure of uniformity. It was only with the coming of mechanization that a bottle could be made identical in appearance and capacity to any number of others.

Apart from groups of itinerant makers, who set up their small furnaces wherever there was a good supply of sand and timber, the glass industry was a monopoly of the Venetian Republic from the fourteenth century. In England, the itinerants started in Kent, Surrey and Sussex, moving northwards in the course of time. Their products were of the simplest description, and anything better had to be imported. In 1549, in the reign of Edward VI, eight Venetian workers were brought to London in an attempt to establish a manufactory there, but the venture failed. A few years later, in 1570, another group of skilled men from the same country was induced to settle in London, and on this occasion success was achieved.

By 1623 the English glass industry had become a monopoly controlled by a retired admiral, Sir Robert Mansell, who was granted a patent in that year. It entitled him to make 'all manner of drinking glasses, broade glasses, windowe glasses, looking glasses and all other kinds of glasses, bugles [beads], bottles, violls [phials] or vessels'.

It was in 1662 that a further patent was applied for regarding bottles. Two men, Henry Holden and John Colenet, stated that they had 'invented and attained unto the perfection of making glass bottles',

and were permitted a monopoly of their manufacture for the ensuing 14 years. However, it was alleged that their claim to the invention was unjustified; it was not a new one at all. The true innovator was said to have been Sir Kenelm Digby, who had ordered some bottles to be made for his own use by Colenet and others some thirty years earlier.

Digby combined the arts of an author, naval commander and diplomatist, as well as being husband of Venetia Stanley, a famous beauty of her time. Whether he had any connexions with the birth of the wine bottle remains unproven, but it was certainly during the last years of his life that they began to be made in England. Prior to their use, wine had been stored in barrels and brought to the table in flacons made of imported stoneware or London-made tin-glazed earthenware (delftware).

It is fortunate for historians of the subject, that glass wine bottles were, from about 1650, often given a mark to denote their ownership. This was applied during manufacture, when a small blob of glass was dropped onto the shoulder or side of the bottle and then impressed with a brass stamp in the manner of sealing a letter. On the seal would appear in raised characters the name or initials, or the crest or coat of arms of the first owner, and quite often also the date of acquisition. Some of the bottles were sealed in this manner for private owners, while others bore inn-signs plus initials and dates to show that they were the property of tavern-keepers.

The earliest known complete bottle is in the latter category. It is sealed with a crowned head, the initials RPM and the date 1657, and was made for a King's Head tavern. The bottle in question is in the Central Museum, Northampton, and in the London Museum is a seal of earlier date, all that remains of a bottle. It bears the legend John Jefferson 1652.

These first bottles were round-bodied with tall necks, but by about 1660 a change in shape had occurred. At first the neck was gradually shortened, then the body grew more squat. By the mid-1680s the bottle had a body that was of greater height than the neck, so that the article was awkward to use; the short neck giving a minimum of area to grip.

As the years passed, the bottle grew into the familiar straight-sided cylinder. It evolved because bottles were used not only at a meal, but for convenient storage. It had been discovered that many wines improved with age provided they were kept from contact with air. A cork provided an effective seal so long as the cork remained moist, and this was easily achieved if a filled and corked bottle was laid on its side. The cylinder shape proved ideal for the purpose.

The passing of the fashion for sealing wine bottles coincided, more or less, with the coming of the glass mineral-water bottle. This beverage set the makers a problem as to how to retain the gas with which the water was impregnated. During the nineteenth century several successive and successful attempts were made to overcome the difficulty. Those patented by William Hamilton and Hiram Codd enjoying a considerable lease of life.

Bottles for containing medicines also survive from the seventeenth century, but old examples cannot always be dated accurately. They were of small size as each held only a single dose, this being the custom until at least the end of the eighteenth century.

Apart from improvements in shape to make handling easier, there were few improvements in glass bottles and their making until the mid-nineteenth century. In 1745 a duty was levied on all glass, and was gradually increased over the years. Although the rate for bottles was lower than that for the better quality glass, it was sufficiently high to inhibit progress. At last, in 1845, after agitation and a Government inquiry, the duty was repealed and the industry given freedom to develop.

Mechanization increased throughout the Victorian period, although many small makers continued to turn out cheap bottles by the old hand methods. By 1900 the machine had gained the ascendancy, satisfying a demand that could not otherwise be met. By then, all kinds of pharmaceutical and food preparations, as well as milk, had begun to be distributed and sold in glass containers. Many of them proclaimed their contents in raised letters on their sides; a feature that endured after a paper label had vanished.

Modern developments include designing shapes and formulating types of glass that are both light in weight and resistant to breakage. Bottles are made for continual re-use and treated to minimise the effects of abrasion. Labelling can be provided by printing directly on the glass surface with special enamels fired to make them permanent. In contrast to these modern achievements, there has been a revival of the old custom of sealing. Several wine and spirit merchants have adopted the practice, but with a difference; the seal is moulded in one with the bottle, not attached separately as it was in the past.

The present exhibition, *The English Glass Bottle through the Ages*, is divided into several distinct sections. The first comprises wine bottles ranging in date from their introduction in about 1650, with an outstanding number bearing seals, dated or only named. From the dated examples it is possible to deduce approximately the year in which unsealed ones were made, and to follow the sequence of styles from the early 'shaft and globe' to the familiar modern cylindrical

shape. Another section is devoted to nineteenth century and later bottles bearing the names and addresses of brewers and mineral water manufacturers, many of them Cornish. Of the latter, a few of the names are current today, but the majority serve to commemorate those who bore them and made their contribution to the social history and prosperity of the county. Thirdly, are bottles made for containing pharmaceutical products, dating from the 17th century onwards. The later examples bear the names of their one-time contents, but most of them lack such advertisement. Finally, a further section includes the many bottles of which the original use did not entitle them to be listed elsewhere in the catalogue.

In addition there are a number of items serving to illustrate the history of English bottles. Important in this respect is the Roman example which bears on its base the maker's name, Frontinus, who was active in Gaul some 1,500 years ago.



## ACKNOWLEDGEMENTS

Grateful thanks are given to all the Museums, public bodies and private persons who have generously loaned bottles to the Exhibition. Without their co-operation such a comprehensive display would have been impossible. Their names are listed below and, within brackets, the abbreviations used in the catalogue to represent them.

In particular, we thank The Glass Manufacturers' Federation and Mr. Cyril Weeden for their generosity in presenting mounted photographs illustrating the processes of bottle-manufacture: Mrs. H.K. Chanter, Mr. D. Griffiths and his fellow members of the Cornwall Bottle Collectors' Club, Mr. G.J. Hendra and Mr. Paul Stephens who have contributed so extensively to the display of pharmacists', brewers' and miscellaneous modern bottles.

The Ashmolean Museum, Oxford	(Ashmolean)
The City Museum, Bristol	(Bristol)
The Dorset County Museum	(Dorchester)
The Honourable Society of the Inner Temple	(Inner Temple)
Ipswich Museums	(Ipswich)
Launceston Borough Museum	(Launceston)
The National Maritime Museum	(NMM)
The National Trust	
The City Museum, Plymouth	(Plymouth)
The Museums Department, Poole	(Poole)
The Royal Institution of Cornwall	(RIC)
The Salisbury and South Wiltshire Museum	(Salisbury)
The Somerset County Museum, Taunton	(Taunton)
The Victoria and Albert Museum, London	(V & A)
The National Museum of Wales, Cardiff	(Wales)
The Colonial Williamsburg Foundation, U.S.A.	(Williamsburg)
The Yorkshire Museum, York	(York)
Messrs. Findlater Mackie Todd & Co. Ltd.	(FMT)

W.A. Ball Esq., Mrs. D.M. Barwell, P. Berridge Esq., Miss C. Bolitho, the Rt. Hon. Viscount Boyd of Merton, Miss J.K. Braddon, B. Brown Esq., Miss T. Brown, A. Buckingham Esq., Sir John Carew-Pole, Miss G. Carlyon, Mrs. H.K. Chanter (C), D. Cook Esq. (DC), J.C. Crowe Esq., Lieut. K.H. Doble R.N. (D), P. Fox Esq., the Revd. M.B. Geach, D. Griffiths Esq. (DG), G.J. Hendra Esq. (H), Simon Hendra Esq. (SH), W.C. Hellyer Esq., E. Hilder Esq., R. Holmes Esq., D.M. Horsford Esq., C. Hurrell Esq. (CH), Mrs. R. Jenkin, M. Matthew Esq., F.W. May Esq., Lady Newman, T. Osborne Esq. R. Parnall Esq., M. Pengelly Esq. (MP), Mrs. J. Pryor, Mr. & Mrs. L.G.G. Ramsey (LR), the Revd. G. Ruming, R.J. Scruby Esq., the Revd. T. Shaw, C. Staal Esq. (S), R. Steer Esq., P. Stephens Esq. (PS), Mrs. A. Steptoe, Miss J.K. Studden, B. Sullivan Esq., M. Tillson Esq., A. Tomlin Esq., T. Trudgian Esq., Lieut. Cdr. D. Verney, J. Woolf Esq. (JW), and those who have expressed the wish to remain anonymous (anon).

The illustrations of seals are reproduced to three-quarters size. The illustrations of bottles, although to scale, should be used in conjunction with the printed dimensions.

The variations in shape, inclination and distortion of early bottles is so considerable that any attempt at a short description must be to some extent approximate. Throughout all the entries the measurements are given in centimetres, height first, followed by the maximum diameter of the body. The letters sn, mn, ln indicate short, medium or long neck in relation to sb, mb, lb, short, medium or long body. bb indicates bulbous body and ss straight-sided. Other body shapes are cyl – cylindrical, oct – octagonal, rect – rectangular, sq – square. Colours, bl – blue, br – brown, gr – green are qualified as pa – pale, mid, or dk – dark: irid. signifies iridescent. It is taken as read, unless otherwise stated, that all early bottles are of so dark a green as to appear almost black.

The references to R-B, and an accompanying number, are to Sheelah Ruggles-Brise, *Sealed Bottles*, London 1949.

It is fully realised that there are many 'unknown' seal-bottles in public and private ownership: the record of their history can be made more complete if owners will be kind enough to give details of them to the organisers of this Exhibition.

## WINE BOTTLES, 1650 ONWARDS

The very large number of old wine-bottles in the exhibition demonstrates the changes in their shape that took place from c.1650 onwards. The earlier bulbous examples, attractive in appearance but inconvenient to handle, gradually led to the familiar cylinder. In their making, the eye and experience of the craftsman was supreme until 1822, when Henry Ricketts of Bristol patented a simple foot-operated mould. In due course this was supplanted by complicated machines that substituted compressed air for lung power, and were able to produce tens of thousands of identical bottles daily.

1. T.W./two tennis players|l n b b. 22.1 : 13.9 R-B149 (Ashmolean)  
Thomas Wood had a tennis-court behind his tavern, the Salutation in Oxford  
He died in 1663
2. M/TM|l n b b 23.1 : 14.7 R-B127 c.1650 (York)
3. M/WA/crown |l n b b 20.4 : 14.4 R-B125 c.1670 (Ashmolean)  
Excavated in Radcliffe Square. William and Anne Morrell kept the Crown Tavern,  
Oxford 1660-79





4. Crown with OXON flanking it/cypher of Anne Morrell/1685|s n b b. 17.9 : 14.6 R-B126  
Anne Morrell at the Crown 1679-96. see no. 3  
(Ashmolean)

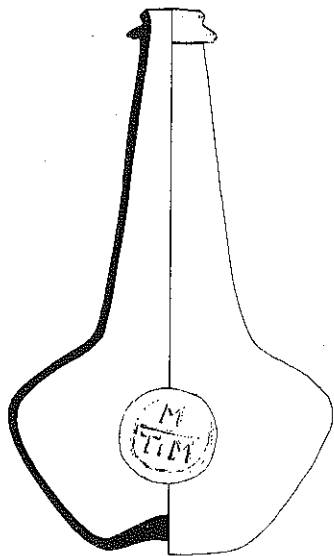


5. Crown/OXON/cypher of Anne Morrell/1688|s n b b 13.4 : 12 R-B126  
see nos. 4-5 (FMT)
6. Crown/OXON/cypher of Anne Morrell/1688|s n b b. 13.4 (FMT)  
: 12 R-B126. see nos. 4-5
7. TL/1686|s n b b. 17.7 : 13.6 (S)
8. No seal|s n b b. 12.7 : 10 (York)
9. I \* C/97|s n b b. 14.7 : 15. (1697) (Taunton)

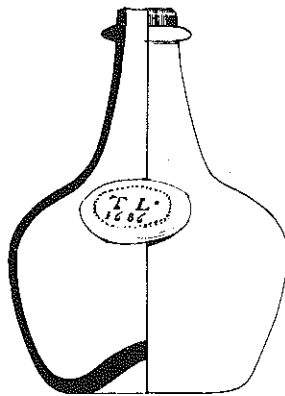
10. 1698 flanking a merchants' mark|s n b b. 14 : 15.9  
Merchants' marks were used on bottles for early Colonial  
America. This bottle was bought in North Devon (S)



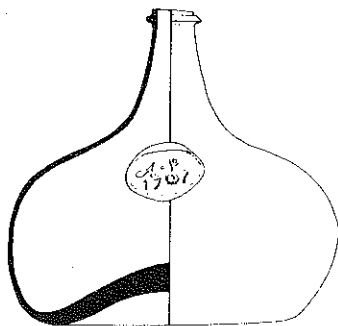
11. REW and 1699 flanking the King's bust|s n b b. est. 16.2 : 15.5 R-B147  
Richard Walker kept the King's Head Tavern, Oxford  
(Ashmolean) 
12. Earl's coronet/CC addorsed|s n b b. 16 : 15.1 R-B91  
Henry Hyde, 2nd Earl of Clarendon, 1638-1709  
(Ashmolean)
13. No seal|s n b b. 13.7 : 14.5 c.1700  
One of a number found in a well in Prince's Street, Truro, on site of  
the Coinage Hall yard  
(DG)
14. No seal|s n b b. 14.3 : 14.9 encrusted with barnacle and  
keeled worm c.1700  
(NMM)
15. [Richard/Beech/1703]|s n b b. 12.8 : 10.5 R-B84  
The inscription was read some years ago and is now barely legible  
(York)
16. Crest : elephant's head couped |s n b b. 13.2 : 13.4  
c.1700  
Eliot of Port Eliot in St. Germans, Cornwall.  
(RIC) 
17. Fleuret/T fleuret M/1700|s n b b. 17 : 14.8 R-B127  
Found in the sand at Hastings in 1898  
(Salisbury) 
18. Armorial : on a bend, three roses barbed and seeded  
s n b b. 15.3 : 16 c.1700  
Arms and crest of Cary  
(S) 
19. Armorial : a chevron between three crosses : crest a  
cockerel|s n b b. 12.2 : 12 c.1700  
(RIC)
20. \*/Tregoff/in Cornwell/1704|s n b b. 13.5 : 13.4 R-B144 (Ipswich)  
The manor of Tregoffe in the parish of Warleggan, Cornwall, was  
purchased by John Tregove alias Nance in 1680
21. No seal|s n b b. 16.1 : 15. irid  
Excavated in York, still corked with contents intact.  
(York)
22. Armorial : on a cross four eagles displayed : crest, a  
Saracen's head|s n b b. 14.6 : 12.5 c.1700  
Arms of Buller  
(RIC)
23. I.Smith/1706|s n b b. 16.3 : 15.3 R-B138  
(FMT)
24. A-P/1707|s n b b. 14.3 : 15.9  
(Bristol)



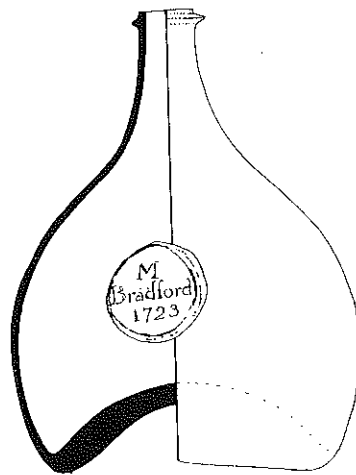
No. 2



No. 7



No. 24



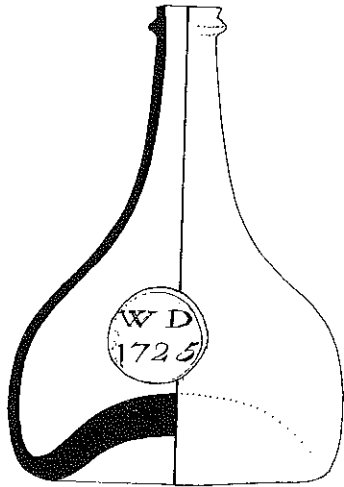
No. 42

25. John./& Eliz. Dorell Pooll/1708|s n b b. 15.4 : 15.1  
The Durell family was prominent in the Borough of Poole,  
members of it serving as Mayor nine times in the 17th and  
18th centuries (Poole)
26. Thomas/Carlyon/St. Blazey/1708|s n b b. 16.5 : 16.2 (Miss G.  
Thomas Carlyon of Tregrehan in the parish of St. Blazey,  
Cornwall, died 1724 Carlyon)
27. OXON/CAT above and to left and right of the Vintners'  
Arms (a chevron between three tuns)/1709|s n b b 15.7 :  
15.3 R-B143 (Ashmolean)  
Culpeper and Anne Tomlinson at the Vintners' Arms, Oxford  
1695-1712
28. PAL(AL conjoined) with encircling legend St. SAUVER (FMT)  
Guernsey 1710|s n b b. 16.2 : 14.6 R-B81  
"this belonged to a member of the Alles family."
29. AT/OXON/ the Vintners' Arms flanked by branches/1713 (Ashmolean)  
s n b b. 13.5 : 11.5 R-B144  
Anne Tomlinson at the Vintners' Arms, Oxford, 1712-19. see no. 27
30. \*/W.Pratt(W.P. conjoined) 1714|s n b b. 16 : 16.3 cf. (Taunton)  
R-B133
31. Tho<sup>s</sup>/Carlyon/1714|s n b b. 13.4 : 12.8 R-B89 see no.26 (Miss G.  
Carlyon)
32. AT/the Vintners' Arms flanked by branches/1715 (Ashmolean)  
s n b b 14.4 : 14.7 R-B144  
Anne Tomlinson : see nos. 27 and 29
33. IOHN/GALTON/TAUNTON/1715|s n b b. 16.2 : 16.5 (Ashmolean)  
cf. R-B104
34. S. BRENT/1715|s n. squared body 17.5 : 14.2 (Plymouth)
35. ∅ ich : Brown/1716|s n. flat oval. 20 : 16.3 x 11.4 (Wales)  
Found in a cupboard in the Olde Rummer Tavern, Duke Street,  
Cardiff
36. Thomas/Glynn/Owner|s n. flat oval. 18.1 : 14.1 x 10.7 (RIC)  
Perhaps Thomas Glynn of Helston, Cornwall, who was buried in the  
Inner Temple, London, 1725
37. : I (fleuret) M/Nicholson/1717|s n b b. 17.6 : 15.6 R-B128 (Taunton)
38. (fleuret) N (fleuret)/: I(fleuret)M1717|s n b b. 15.4 13.1 (Taunton)  
R-B128
39. Crest, a demi-lion rampant rising from the round-top  
of a ship's mast|s n b b. 13 : 13.8 c.1720 (Sir John  
Carew-Pole)  
Crest of Carew
40. SM/Grimes/1721|s n b b. 13.7 : 14 (RIC)  
Samuel Grimes married Mary, daughter of the Rev. James  
Beauford, at St. Columb Major, Cornwall in 1721
41. \*/Marger[y]/Lethard/1721|s n b b. 14.3 : 14.9 (RIC)

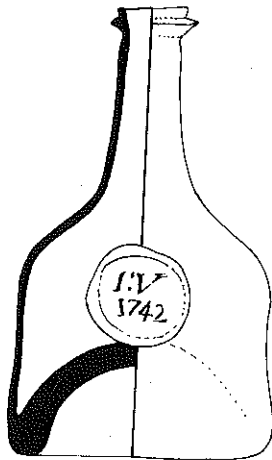


42. M/Bradford/1723|s n. flat oval 20.9 : 16.4 x 13 (RIC)
43. T/Welman/1723|s n b b 15 : 12.5 R-B149 (Taunton)  
Thomas Welman (1693-1757) of Poundisford Lodge, Pitminster, Somerset
44. (fleuret)/DVO/1724|s n b b. 17.5 : 14.8 irid (FMT)
45. E/Watts/1725|s n b b 15.7 : 11.9 R-B148 (Taunton)
46. TS/1725|m n b b. 18 : 15.5 (Taunton)
47. WD/1725|m n. flat oval truncated 18.1 : 13.3 x 10.8 (Taunton)  
R-B100
48. Iohn/Tallamy/1725|m n b b. 17.1 : 15.8 (RIC)
49. Geo:/Treweweke/1726|m n. flat oval 20.5 : 15.5 x 12.9 (Mrs. G. Pryor)  
Found in a hedge-bank near Helston, Cornwall. The will of a George Treweweke of Camborne was proved at Bodmin in 1734
50. No seal|m n b b. 18.7 : 15.7 Diamond-engraved with male and female figures and an urn of flowers : inscribed Iohn Littler : 1739 (Anon)
51. Hub<sup>t</sup>/Husey/1727|s n b b. 16.5 : 15.9 R-B114 (Salisbury)  
Found near Salisbury
52. S/Lyne/1728|s n b b. 13.7 : 13.3 (LR)
53. Ia<sup>s</sup>/Stevens/Lanceston|m n b b. 18.1 : 14.7 c.1730 (Launceston)  
A James Stevens, goldsmith of Launceston, died in 1742
54. Tho:/Parsons/Luxilian/\*|s n b b. 16 : 15.3 c.1730 (Miss G. Carlyon)  
Luxilian, a parish in mid-Cornwall. The name of Thomas Parsons appears on the parish rate of 1740
55. T/Edwards/1729|m n s s. 18.7 : 14 cf. R-B100 (Taunton)
56. Armorial : four lozenges in fess : crest, a stag's head m n s s. 19.9 : 14.1 c.1730 (Dorchester)
57. R. Dugdale (RD in monogram)/Wareham|m n s s. 21.9 14 c.1730  
Dugdale was a Wareham name. Robert Dugdale buried at St. Mary's Wareham, in 1766, aged 78 (Dorchester)
58. No seal|m n s s. 26 : 13.5 irid. c.1730 (R.J. Scruby Esq.)  
Dredged from a lock at Sproughton near Ipswich in 1974.
59. Henry/Dunning/1730|m n s s. 20 : 13.6 (E.Hilder Esq.)
60. (fleuret)/G\*H/1733|m n s s. 19.4 : 12.4 (FMT)
61. J: Lowther Esq<sup>r</sup>/Upleatham/1734|m n s s 21.9 : 13.4 (York)  
R-B121  
Upleatham in the North Riding, Yorkshire. R-B gives Sir James Lowther, 4th Baronet, 1684-1755, but note Esq<sup>r</sup>
62. In<sup>o</sup>:/Smith|m n s s. 21.1 : 13.8 c.1735 (RIC)
63. R/Hodge|m n s s. 21.7 : 13.4 c.1735 (RIC)  
Perhaps Cornish : note the same surname in 109 and 152
64. Ynys/Y maen/Gwyn/1738|m n s s. 22.7 : 13.4 R-B151 (Wales)  
Island of the White Stone, a house and estate of the Corbett family near Towyn in Merionethshire
65. H/Saunders/Waterslade/1738|m n s s. 21.4 : 14.5 R-B138 (Taunton)  
"Waterslade is at Taunton."
66. M. Knight(MK conjoined)/1739|m n s s 21.3 : 14.7 (Poole)
67. Armorial : a lion rampant guardant within three lozenges|m n s s. 20.8 : 14.3 c.1740 (Plymouth)

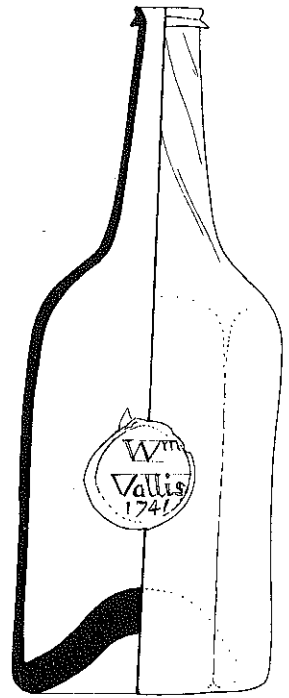




No. 47



No. 70



No. 69



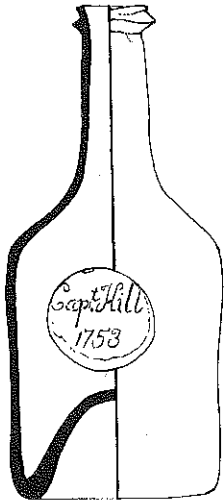
68. **Armorial : arms and crest of Buller, as in 22 : motto, AQUILA NON CAPIT MUSCAS**|m n s s. 22.2 : 13 (Salisbury)  
Bought at Chulmleigh, Devon, in 1901
69. **Wm/Vallis/1741**|l n. oct. 26.5 : 10.6 (Poole)
70. **I:V/1742**|m n s s. 17.1 : 10.3 R-B145 (York)  
R-B gives Issac Uppleby of Barrow-on-Humber
71. **Gam:/Betts/Ply:Dock/1745**|m n s s 22.9 : 12.5 (Plymouth)  
Will of Gamaliel Betts of Stoke Damarel proved at Exeter in 1756
72. **A/T.Sampson/1746**|m n s s. 22.1 : 10.8 (FMT)
73. **E./Brown/Kidwel**[I] 174[?]|m n s s. 21 : 12.4 (Wales)  
Kidwelly in Carmarthenshire
74. **Armorial : arms and motto as in 68**|m n s s. 23.7 : 12.1 (Salisbury)  
**a re-engraving of the seal on no. 68**  
With a paper label "Old Jamaica Rum from J.D. Partridge, East Street, Chulmleigh."
75. **Castle/Haword/1753**|m n s s 21.7 : 12.4 R-B111 (York)  
Almost certainly Castle Howard, seat of the Earls of Carlisle, Henry Howard, 4th Earl, 1694-1758
76. **I. Dally/1753**|m n s s. 23.9 : 11.8 R-B96 (Plymouth)  
Same surname in 90, Thorverton, Devonshire
77. **Cap<sup>t</sup> Hill/1753**|m n s s. 20 : 9 R-B112 (York)  
On reverse in gilt letters within a cartouche GIN
78. **G:Jeffer[y]/Vicar of/[L] inkinh<sup>o</sup>/1756**|l n s s. 20.5 : 8.5  
The Revd. George Jeffery, admitted in 1725, was Vicar of Linkinhorne in Cornwall for fifty-six years. This bottle is perhaps unique in being included in the church inventory  
(Rev. M.B. Geach)



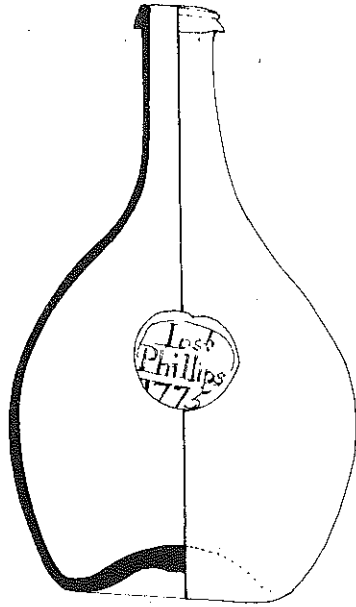
79. **W.S (between flourishes)/Bourn/HEATH/1760**|s n r s. 18.1 : 13.5 R-B142 (Salisbury)  
Bought at Broadway in the Cotswolds, 1902
80. **R./Gaskell/1761**|m n b b. 26.7 : 10.3 R-B105 (Wales)
81. **Wm/Blombe<sup>rg</sup>/1763**|m n m b. 25.2 : 10.7 (York)
82. **A/D\*M/Needh<sup>m</sup>MK/1764**|m n m b. 24.9 : 11.7 R-B126 (York)  
Needham Market in Suffolk
83. **I.Chappell/1764**|m n m b. 20.5 : 12 R-B90 (Taunton)
84. **Cha/Pugh/1765**|s n m b. 21.9 : 11.2 R-B134 gives Chas Pugh 1763 (Plymouth)  
Diamond-engraved, John Pugh 1794
85. **C/Pugh/1765**|s n m b. 22.9 : 11.5 (Plymouth)  
Diamond-engraved, John Pugh 1794, as in no. 84
86. **C/Pugh/1765**|s n m b. 24.5 : 11.6 (Taunton)  
Seal identical to 85, but bottle shape different
87. **TW/1767**|m n m b 24.4 : 12.3 (Salisbury)  
The Wyndhams of Dinton near Salisbury, Wiltshire
88. **17 I 67/Spettigue/Treeneg<sup>s</sup>**|s n m b. 22.9 : 11.5 (Miss J.K. Braddon)  
John Spettigue who purchased the manor of Downeckney in the parish of Treeneglos, Cornwall
89. **S:C/Esq<sup>r</sup>/1769**|m n l b. 27.1 : 9.6 R-B95 (York)
90. **I/Dally Es<sup>r</sup>/Thorvert<sup>n</sup>/1770**|l n l b. 29 : 20 see No. 76 (Plymouth)
91. **In<sup>o</sup>/Davis/Merthyr/1770**|m n m b. 23.9 : 11.7 R-B97 (Wales)

92. 1770/James/Oakes/Bury|m n l b. 26.2 : 9.5 R-B129 (RIC)  
Similarly sealed bottles, dated between 1770 and 1795, are recorded and James Oakes is assumed to have been a wine merchant in Bury St. Edmunds. The Universal British Directory of 1791 gives a James Oakes, yarn-maker, there
93. \*/Jn<sup>o</sup>/Andrews/1770|m n. oct. 23.1 : 8.5 R-B81 (FMT)  
w/o suggests John Andrews (1736-1809), writer and pamphleteer, of Kennington, Surrey
94. T.I/Wedgwood/Burslam/1770|m n m b. 26.4 : 9.9 R-B148 (FMT)  
who suggests Thomas, cousin and partner of Josiah Wedgwood the potter
95. 17H71/Williams/Colan|s n m b. 22.9 : 12 see no. 152 (T. Osborne Esq.)  
Susanna, daughter of Hugh Williams of Colan, Cornwall, married William Hodge of Perranzabuloe in 1800
- 95a. TV/1771 within a scroll-work of vine and grapes  
m n m b. 25.5 : 12.2  
Found on shore in the Helford River. Perhaps Thomas Vyvyan of Treloar Warren and later of Trewan (Mrs. R. Jenkin)
96. P/Gregory/Biddeford/1771|s n m b. 24.2 : 11.1  
Biddeford in North Devon (S)
97. N./Bidgood/1773|m n m b. 28.3 : 12.1 (Taunton)
98. In<sup>o</sup> Battrell/Towedenack/1773|m n m b. 23.4 : 12.2 (RIC)  
John Battrell was born at Towednack, Cornwall in 1733, married at St. Ives in 1768 when described as a tinner
99. Rolle/1774|l n l b. 27.7 : 9.7 R-B136 (FMT)  
"this is presumably the seal of John Rolle 1750-1842 of Bicton House, Exeter."  
With paper Cognac labels on reverse and base
100. Jos<sup>h</sup>/Phillips/1775|m n. flat oval 23.7 : 14.8 x 9.1 (RIC)
101. Jn<sup>o</sup>/Newman/Dartm<sup>o</sup>/1775|l n l b. 27.5 : 9.1 R-B128  
"John Newman, 1743-79 ....., merchant of Newfoundland and Dartmouth, Devon."  
(Lady Newman)
102. 17Wm75/Braddon Gen<sup>t</sup>/Bridge-rule/semi-circular (Miss J.K. Braddon)  
decoration|s n m b. 22.9 : 11.5  
William Braddon, probably of Newacott in the parish of Bridgerule, Cornwall
103. T. Fox./1776|l n m b. 26.7 : 10.1 (Dorchester)

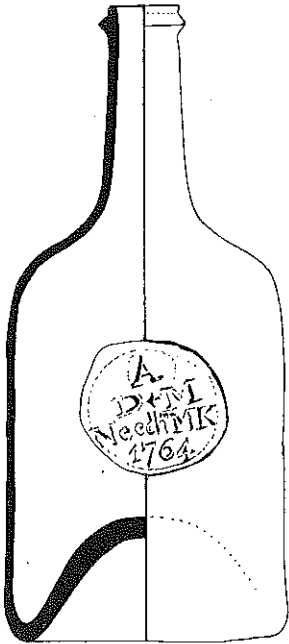




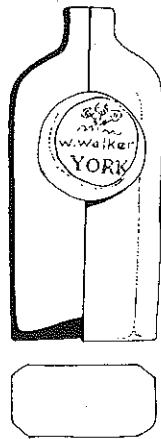
No. 77



No. 100



No. 82



No. 132

104. W/Daubeny./1776|s n m b. 23.3 : 11.4 R-B96 (Bristol)  
Daubeny, a prominent Bristol family
105. Robt/Jeffery/Huntshill/1777|s n m b. 23.3 : 10.8 R-B116 (York)
106. J./Cave./Chetnol/1777|s n m b. 24.5 : 11.7 (Dorchester)  
Chetnole in Dorset
107. Rowd/Veale-/Gwithian/-1778-|l n. chamf. rect. 27.2 : (RIC)  
11.6 x 8.1 R-B145  
Rowland Veale, born in Newlyn East, Cornwall in 1737, married at Gwithian in 1766. Described as yeoman, buried at Gwithian in 1807
108. (flourish)/R.P.A./1779|l n l b. 28.3 : 9.8 (FMT)
109. T/Hodge/Callestock|m n m b. 24.2 : 11.5 (RIC)  
Callestock in the parish of Perranzabuloe, Cornwall. Thomas Hodge the father of William (see no. 152). A family of substantial yeomen
110. T(flanked by flourishes)/Edwards/Ninnis|m n m b. 24.1 : (RIC)  
11.5  
Thomas Edwards purchased land at Ninnis in the parish of Lelant, Cornwall, in 1780
111. H./Ellis \*/1780|m n m b. 23.8 : 11.8 (MP)
112. T/Bult/Nailsbor/1780|m n m b. 23.8 : 11.2 (Plymouth)
113. No seal|25.2 : 9.1 : mid gr. (NMM)  
Recovered from York River, Virginia, believed to have come from a British war vessel at the siege of Yorktown in 1781
114. I./Knill/1781|l n l b. 29.4 : 9.1 (RIC)  
John Knill, born Callington, Cornwall, in 1733. Collector of Customs in St. Ives, where he commanded volunteers and promoted privateers. Built his mausoleum in 1782. Died 1811
115. I./Knill/1781|l n l b. 23.8 : 8.5. see no.114 (RIC)
116. P./Hambly/Lean/Liskd/1781|m n m b. 24.4 : 11.9 (C)  
Lean is a farm in the parish of Liskeard, Cornwall
117. F.B./Treore/1783|s n m b. 23.4 : 10.8 (RIC)  
Treore in the parish of Endellion, Cornwall, where Francis Brown, gent., was tenant. Married Mary Garland at Endellion in 1777. He died in 1800
118. F.B./Treore/1738|s n m b. 23 : 10.7 see no. 117 (RIC)
119. N.B /Dursley/1738|s n m b. 13.6 : 10.5 (Bristol)  
UBD 1791 lists a Nathaniel Blackwell gent in Dursley, Glos
120. J(fleuret)Pitfield/1784|s n m b. 22.7 : 11.5 (Poole)
121. MR/1785|s n m b. 26.3 : 11.5 (DG)
122. T\*/Tremewen/1785|s n m b. 24.3 : 11.4 R-B144 (RIC)  
Tremewen, a yeoman family in St. Buryan (Cornwall). In 1778, at Sennen, Thomas Tremewen of St. Buryan married Anne Williams. He died at Bosfrankan in 1815
123. H./Snell/1786|l n l b. 29.7 : 10 (RIC)  
Snell is a relatively common name in east Cornwall
124. Revd/In<sup>o</sup> Rouse/1786|m n m b. 24.5 : 11.5 (Miss G. Carlyon)  
Rector of Tetcott, Devonshire, 1784-1811, and Rector of St. Breock, Cornwall, 1816-17: died at Tetcott 1818
125. S./Gomond/1788|s n m b. 20.4 : 15.2 R-B106 (Salisbury)  
Bought in Little Wine Street, Bristol, 1902
126. R./Williams/St. Issey/1789|m n m b. 24.1 : 10.6 (T. Osborne Esq.)  
St. Issey, a parish on the Camel Estuary in Cornwall
127. C./Drake/1790|m n m b. 23.5 : 11.8 (Bristol)
128. Wm/Tremain/Newlyn|s n m b. 23 : 11.4 c.1790 (RIC)  
Probably the parish of Newlyn East in mid-Cornwall, rather than Newlyn in West Cornwall

129. I/Webber/—|s n m b. 22.4 : 11.5 R-B148 c.1790 (Salisbury)  
Bought in Devon in 1900
130. RW/St Just/—|m n m b. 23.8 : 11.5 c.1790 (RIC)  
St. Just in Roseland, a parish in mid-Cornwall or St. Just in  
Penwith in west Cornwall
131. N(within a flourish)/Oats./L:Lant/(flourish)|m n m b. 24.1 (RIC)  
: 11.9 c.1790  
Nicholas Oats, tinner of Ludgvan, married Jane Edwards at Lelant,  
Cornwall in 1770: he had been born at Ludgvan in 1743
132. Prince of Wales feathers/W. Walker/YORK|rect. chamf. (York)  
s n. 14.2 : 6.4 x 4.5 R-B147  
Probably a tavern-keeper's bottle
133. Ns/STEER./St Dom<sup>k</sup>/1791|m n m b. 24.3 : 11.5 (R.Steer Esq.)  
Steer still a local name in the parish of St. Dominick, Cornwall.  
Nicholas Steer, St. Dominick, yeoman, will proved Bodmin, 1818
134. 1791|s n l b. 17.8 : 6.3 (LR)
135. T/ANSSELL/Wantage/1792|s n m b. 24.2 : 10.7 R-B82 (Ashmolean)  
The Universal British Directory of 1791 lists Thomas Ansell,  
tanner, in Wantage, Berks
136. C./Ellis/1793|m m l b. 27.3 : 9.7 R-B101 (PS)  
Christopher Ellis of Hayle who established the Hayle Breweries  
c.1815
137. D<sup>t</sup>/Venning/Alternon/1793|s n m b. 22 : 11.5 (RIC)  
The will of a Daniel Venning of Altarnun, yeoman, was proved at  
Bodmin in 1813
138. Wm/EDGCOMBE/1793|m n m b. 24.6 : 11.5 R-B100 (Ipswich)  
Edgcombe was a not uncommon name in East Cornwall and  
West Devon
139. N/HAWKE/St Cleer/1793|l n m b. 25 : 11.9 (RIC)  
The will of Nicholas Hawke of St. Cleer, Cornwall, yeoman, was  
proved at Bodmin in 1813
140. FOX/1793|l n l b. 28.6 : 10 (P. Fox Esq.)  
Probably the Fox family of Falmouth, Cornwall, prominent in  
the town as merchants, ships agents, consuls
141. John Pugh/1794|m n l b. 26.5 : 9.5 R-B134 (Plymouth)
142. John Pugh/1794|m n l b. 26.6 : 9.3 R-B134 (Taunton)  
Similar to no. 141
143. T./Dampier/1798|s n m b. 23.3 12.2 R-B96 (Dorchester)
144. Wm/Eddy/Cornelly/1799|s n m b. 23.3 : 11.4 (T. Trudgian  
Esq.)  
William Eddy baptised at Cornelly, Cornwall in 1768
145. No seal. Gilt decoration : within a wreath, a ship/  
Success to the John Blackwell's n m b. 19.9 : 17.6 (Anon)  
c.1800
146. RMB/Flexbury|s n m b. 22.8 : 11 c.1800 (R. Parnall  
Esq.)  
Richard Martyn Braddon : Flexbury in the parish of Poughill,  
Cornwall
147. J/Worden/St. Kew|s n m b. 25.2 : 11.1 (Rev. T.Shaw)  
John Worden, yeoman, of Lower Amble, St. Kew, Cornwall  
(1767-1832). The yeoman farmers of North Cornwall are well  
represented by bottle seals : no doubt the possession of sealed  
bottles was a symbol of substance. see no. 291
148. T./Biddick/Bridge|s n m b. 24 : 11 c.1800 (D.M.Horsford  
Esq.)  
The surname Biddick belongs to the parishes near the Camel  
Estuary in North Cornwall, and Bridge probably means Wadebridge
149. FOX & SONS|l n l b. 28 : 10 c.1800 see no. 140 (RIC)
150. Is<sup>c</sup>/Fussell/—|s n l b. 20.3 : 7.5 R-B104 c.1800 (Salisbury)

151. J.S.|m n l b. 26.8 : 9 (Ashmolean)
152. W<sup>m</sup> Hodge/1800/Lambourn|m n m b. 25.7 : 10.4 (RIC)  
see nos. 63, 95 and 109  
Lambourne in the parish of Perranzabuloe, Cornwall. William Hodge born at Callestock in 1746, died at Lambourne in 1838
153. Coronet/crest, a boar|l n l b. 28.3 : 9.3 (RIC)  
Edgumbe of Mount Edgumbe, Devon later Cornwall
154. As in no. 153 with seal re-engraved|l n l b. 28.1 : 9.8 (RIC)
155. Crest, a hand upraised/H.C.|m n l b. 27.3 : 9.2 R-B62  
Sir Henry Carew, 7th Bart 1789-1830, of Haccombe House, Newton Abbot, Devon. (Miss T. Brown)
156. Rob<sup>t</sup> Fox/Falm<sup>o</sup>|s n m b. 25.7 : 9.2 see nos 140 and 149. (RIC)  
Robert Were Fox died 1818
157. T./Nankivell/Probus|l n l b. 29.4 : 10.1 (Mrs. D. Barwell)  
T. Nankivell was at Golden in the parish of Probus, Cornwall in 1812
158. R. Jones/Esq<sup>r</sup>/Fonmon Castle|l n l b. 29.1 : 9.9 R-B117 (Wales)  
Fonmon Castle in Glamorganshire
159. Crest, a coronetted head|m n l b. 26.5 : 9.1 (York)
160. -I-N-/HAWKER/flourish|l n l b. 27.2 : 9.4 (A. Tomlin Esq.)  
Isobel N. Hawker of the Plymouth family of wine-merchants
161. T./Bolitho Jr./—|m n l b. 27.5 : 10.2 (Miss E. Bolitho)  
Thomas Simon Bolitho, of the mercantile and banking family of Fenzance: he died in 1858
162. The fused remains of a bottle melted during the Battle of Trafalgar, 1805 (NMM)
163. Bottle, still corked and sealed, said to contain port from Admiral Lord Nelson's cellar|s n l b. 27.8 : 8.6 (NMM)
164. W<sup>m</sup>/Ridgeman/N. Petherwin/1806|s n m b. 22.3 : 10.5 (Launceston)  
North Petherwin, a parish on the borders of Devon and Cornwall, near Launceston
165. -I-T-/ynys/y plwm/1808|s n m b. 24.2 : 13.5 (Wales)  
From Gelli Fud, Blackmill, Bridgend, Glamorganshire
166. T./Grose/St. Kew/1814|s n m b. 24.3 : 10.6 (MP)  
Thomas-Grose married at St. Kew, Cornwall in 1771
167. RHC/1815|s n l b. 28.3 : 9 R-B 92 (Taunton)  
Richard Hall Clarke of Bridwell, Uffculme, Devon, 1750-1821
168. Jns:/Williams/Ruan/1815|s n m b. 24.5 : 10.9 (RIC)  
Probably of Ruan Laniorne in Cornwall, rather than Ruan Major or Minor on the Lizard which are more likely to have been qualified
169. Rev<sup>d</sup>/Jn<sup>o</sup> Moore/1817|s n l b. 27 : 9 R-B124 (Ashmolean)
170. Tho<sup>s</sup>/Bolitho/1817|s n l b. 28.3 : 9 see no. 161 (Miss C. Bolitho)



Nos. 171-8, although varying in body-shape and in date between 1790 and 1828, have the common feature of a stepped double conical rim

171. W. Williams/Surgeon/Llandovery|s n m b. 25.8  
: 11 R-B149 (Wales)  
Llandovery in Carmarthenshire



172. Geo./Willmott/Axminster|s n m b. 24.2 : 11 (Salisbury)  
Axminster in Devonshire

173. Tho<sup>s</sup>/Bolitho/1819|s n l b. 27 : 8.5 see nos. 161 and 173  
(RIC)

174. Coronet/R|s n l b. 26.8 : 10 R-B136 (S)



175. Crest, as no. 39 (Carew)|s n m b. 25.7 : 10.1  
(Sir John Carew-Pole)

176. W<sup>m</sup> Rowe/1820/Newland|s n m b. 25.4 : 10.9  
Probably Newland in Linkinhorne, Cornwall, although  
there are also Newlands in Cardinham and St. Minver  
(RIC)



177. I./Carrivick/1822|s n m b. 25.5 : 10.7  
John Carrivick married Dorothy Henwood at Crantock,  
Cornwall, in 1803 (RIC)

178. Crest : an ostrich on a cap of maintenance  
s n l b. 27.8 : 8.5. Seal placed towards base  
(Dorchester)



179. J./Groves/1828|l n l b. 28.6 : 8.7 (Taunton)

180. Bottle found at Beechey Island in 1850, recovered (NMM)  
after Sir John Franklin's Arctic Expedition|s n l b. 27.4 : 8.3

Nos. 181-198 each bear the work PATENT on the shoulder, and under the base H RICKETTS & CO. GLASS WORKS BRISTOL. They were made in the mechanical mould patented by Henry Ricketts in 1822

181. Sam<sup>l</sup>/Archer/—|s n m b. 26.4 : 10.2 (S)  
Samuel Archer of Trelaske in the parish of Lewannick,  
Cornwall, 1745-1822

182. W<sup>m</sup>/Martyn/Ruan|s n m b. 26.9 : 10.8 see no. 168 (T. Trudgian Esq.)

183. W. Jeffery/St. Enoder|s n m b. 27 : 10.6 (PS)  
William Jeffery, yeoman, married at St. Enoder, Cornwall,  
Elizabeth Hawke, widow, in 1809. He was of Retyn. Died 1842

184. R.C./Polgreen|s n m b. 27 : 10.5 (RIC)  
There are places called Polgreen in the parishes of Mawgan in Pydar, Newlyn East and St. Veep, and Polgreen in Cury and Ludgvan, all in Cornwall
185. S.P.|s n m b. 26.2 : 10.6 (RIC)
186. W. Leman/Chard./1771|s n m b. 13.7 : 9.9 R-B118 (LR)  
W. Leman was a brewer in Chard, Somerset (Pigot's Directory 1830) and would seem to have used on his seals a much earlier date which must have had some significance for him
187. W. Leman/Chard./1771|m n l b. 28 : 9 see no. 186 (Taunton)
188. Edward/Peter/Northhill|s n l b 28.2 : 9.7  
Edward Peter, farmer, at East Berriow in Northhill, Cornwall. Married before 1822. Died, aged 82, in 1873  
(Launceston)
189. Crest, a lion's head erased/WW|m n l b. 27.4 : 9.1 R-B150  
From the cellar at Dinton House, Wiltshire.  
See no. 87  
(Salisbury)
190. DBD/1829|m n l b. 27.8 : 9 R-B99 (Taunton)  
Daniel Bishop Davy, shipbuilder, Topsham, Devon. R-B gives the same initials and list 1820, 1826, 1828, 1830, 1836 and 1837. Was he also a wine-merchant?
191. John Griffiths/Of the Mary/Cardigan|m n l b. 27.5 : 8.9 (Wales)
192. Buzza./St Jves|m n m b. 23.4 : 8.2 (RIC)  
A surname of the St. Ives area in Cornwall
193. Kempthorne/St Jves m n l b. 23.7 : 8.2 (RIC)  
St. Ives in Cornwall
194. PACK-HORSE/INN/St Blazey s n m b. 22.5 : 9.8 (RIC)  
St. Blazey in mid-Cornwall where the name of the inn survives. In 1834 the landlord was Thomas Robins and in 1845 Mark Richards
195. Wm/Taylor/Bossiney/1836|s n m b. 26.5 : 10.4 (RIC)  
Bossiney, Tintagel in Cornwall, a parliamentary borough until 1832. William Taylor, Officer of the Customs in the 1790s, landowner and gent
196. G & P./Stephens/St Tudy/1836|s n m b. 26.2 : 10.2 (RIC)  
George Stephens, tenant-farmer at Hengar in St. Tudy, Cornwall, married Priscilla Symons at St. Tudy in 1826
197. George Bowen Esq./1838/Llywngwair|m n l b. 27.4 : 8.9 (Wales) R-B85  
Llywngwair in Newport, Pembrokeshire





198. N./Lawrence/Launceston/1840|m n l b. 27.3  
: 8.7 mid. gr.  
Northmore Herle Pierce Lawrence (1801-1878) of  
Launceston, attorney and mayor of the borough  
1837-8

(R.Parnall Esq.)



199. FREDERIC LATIMER/OXFORD/WINE  
MERCHANT|m n l b. 27.6 : 8.5. Seal near base.  
In business at 11 High Street between 1846 and  
1870

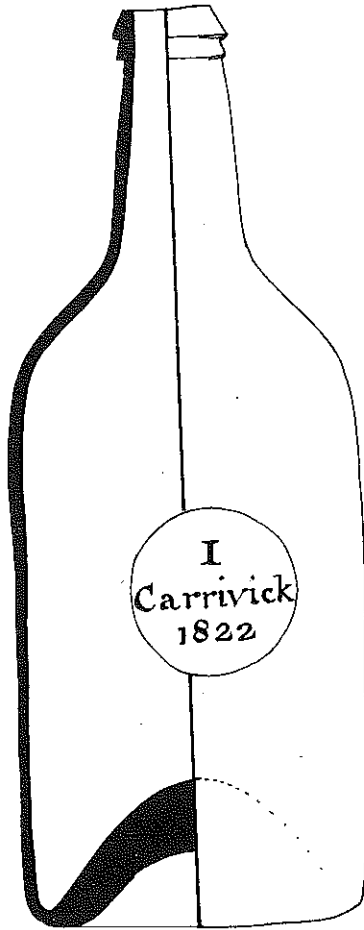
(Ashmolean)



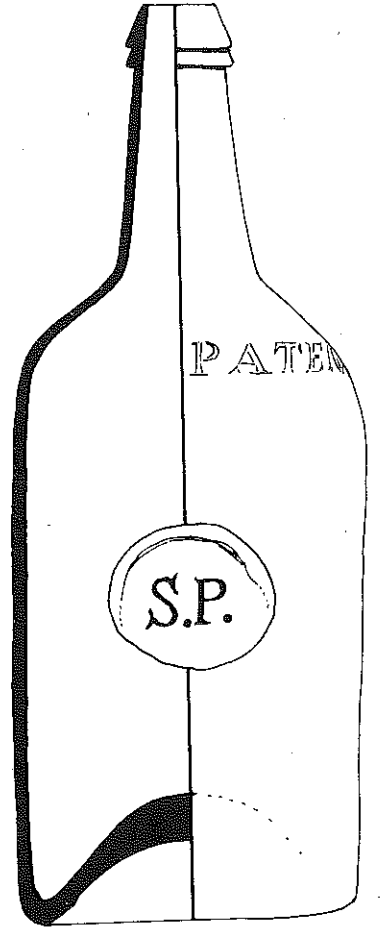
200. No seal|s n m b. 21.9 : 10.1 marked on base WEAR  
GLASS BO. Co. DEPTFORD|c.1850 (Miss J.K. Studden)  
The Wear Glass Bottle Company had premises at Deptford,  
a district of Sunderland c.1814-92
201. No seal|l n l b. 28.9 : 8.7 PATENT on shoulder, P.R.& F. (S)  
BRISTOL on base (Powell, Ricketts and Filer 1853-6)
202. No seal|m n m b. 24.1 : 9.7 PATENT on shoulder, P.& R. (RIC)  
BRISTOL on base (Powell and Ricketts 1856-65)
203. Armorial : saltire between twelve billets|l n l b. 29.1 : 8.8 (A. Tomlin Esq.)  
pa. gr. late 19th cent. Arms of Champernowne of  
Dartington, Devonshire. On base POWELL & Co. BRISTOL
204. Crests, a swan displaying, and a demi-lion rampant holding  
a branch|m n l b. 29.4 : 8.7. On base POWELL & Co.  
BRISTOL. Late 19th cent. (MP)
205. Crest, coronet/a boar (Edgcumbe of Mount  
Edgcumbe)|m n l b. 28.3 : 9.6. Late 19th cent.  
See no. 153 (RIC)



- 205a. Hart Key/Pawton|m n m b. 22 : 8.5 R-B117  
RICKETTS, BRISTOL, Bristol on base, PATENT on  
shoulder. Mid-late 19th century (Miss S. Garland)  
Hart Key, farmer at Pawton in the parish of St. Breock, Cornwall
206. LUPTON|m n l b. 27.7 : 8.9. Late 19th cent. (A. Tomlin  
Esq.)  
Lupton House, Churston Ferrers, Devon, former seat of the  
Yarde-Buller (Barons Churston) family
207. ROG (in script)|s n l b. 26.3 : 8.8 mid. gr. R-B108 (York)  
Late 19th cent.
208. No seal|s n l b. 29.9 : 8.1 mid. gr. barnacled. Late 19th (MP)  
cent.  
Found in 1967 in Mounts Bay, Cornwall, in the remains of a ship  
wrecked in 1897
209. W & H/1877 (on the shoulder)|m n l b. 26.2 : 8.4. mid. gr. (S)  
On base Williams & Humbert. Modern.  
Paper label, Williams & Humbert Amontillado Sherry. The date  
is that of the firm's foundation.



No. 177



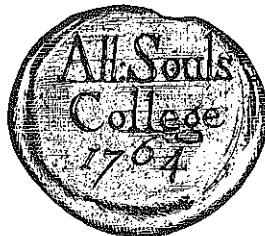
No. 185

Nos. 210-222 A series of bottles made for use at table in the Common Rooms of Oxford Colleges and the Inner Temple

210. All : Souls/College/1764 | m n m b 25.3 : 9.9 mid. gr.

(for All Souls bottles see Jeremy Haslam in Oxoniensia xxv (1970))

(Ashmolean)



211. A\*S/C\*R | m n l b. 28 : 9 (LR)

212. A.S/C.R | s n l b. 26.2 : 8.9

(A. Buckingham Esq.)



213. A.S/C.R | m n l b. 29.9 : 9.2 19th cent. (Viscount Boyd)

214. A.S/C.R | m n l b. 29.3 : 9.1 19th cent.

(Viscount Boyd)

215. Ch:Ch/C:R | m n m b. 24.5 : 10  
Christ Church College Common Room

(Ashmolean)

216. CC/CR | l n m b. 26.8 : 9.5  
Christ Church College Common Room

(Ashmolean)

217. Linc. Coll/C.R/OXON | m n l b. 27.7 : 8.9  
Lincoln College Common Room

(Ashmolean)

- 218 (flourish)/Mag: Co/C.R. | l n m b 21 : 8.3  
Magdalen College Common Room

(Ashmolean)

219. O.C/C.R | m n l b 27.1 : 9.2  
Oriental College Common Room

(Ashmolean)

220. T.C/C.R | m n l b 27.4 : 9.5  
Trinity College Common Room

(Ashmolean)

221. INNER TEMPLE | s n l b. 24.5 : 10 Seal near base  
Used for the port ration at dinner. Other Inns of Court probably had similar bottles

(The Inner Temple)

222. INNER TEMPLE | m n l b. 29.4 : 7.1 Seal near base  
Used until 1960 to provide port for four

(The Inner Temple)

223. No seal | s n b b. 15.2 : 14.8. irid. late 17th cent.  
Excavated in York. The wide neck suggests the bottle was used for preserves

(York)

224. W./Wrathe(n?)/1776 | s n m b. 22.1 : 11.7 B-R150 mid. gr.  
Again the wide neck suggests a use for preserves

(York)

225. No seal | s n m b. 19.2 : 7.6 18th cent.  
Another wide neck

(York)

Nos. 226-256 Larger bottles and bottle-like containers used for storage

226. No seal | m n b b. 48 : 42.5. Capacity 51 pints. Late 17th or early 18th cent.

(Lady Newman)

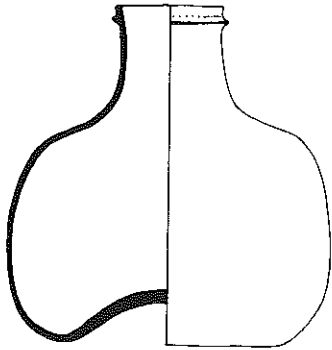
Given to the late Sir Ralph Newman by John M. Bacon, as founder-member of the Glass Circle

'Large' bottles, in a more modern sense, are those which contain multiples of the normal bottle size (75 centilitres in Bordeaux, 80 in Champagne). The larger the bottle the more slowly and lusciously the wine matures and the longer it keeps. The names applied to bottles vary from area to area, but basically there are two descriptions Bordeaux and Champagne, listed below. Burgundy tends to conform to the Champagne descriptions.

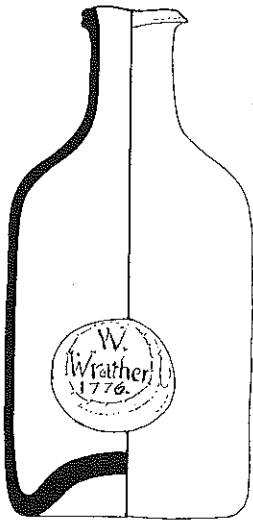
CAPACITY	BORDEAUX	CHAMPAGNE
2 bottles	Magnum	Magnum
3 "	Marie-Jeanne	
4 "	Double Magnum	Jeroboam
6 "	Jeroboam	Rehoboam
8 "	Imperial	Methusaleh
12 "		Salmanazar
16 "		Balthazar
20 "		Nebuchadnezzar

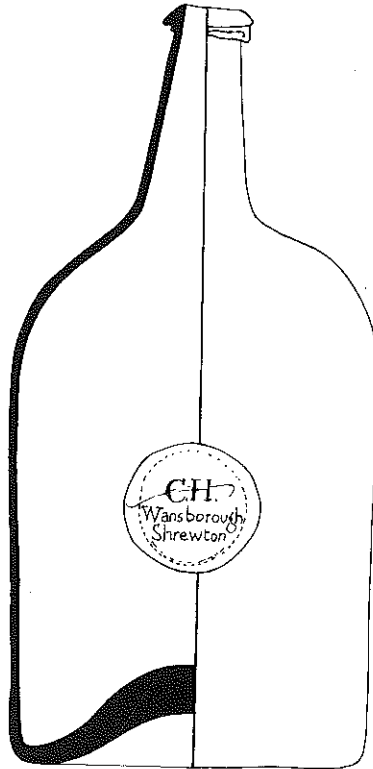
227.	No seal m n b b. 31.5 : 25 early 18th cent.	(York)
228.	No seal l n flat oval 29.4 : 20 x 16.1 early 18th cent.	(RIC)
229.	No seal l n s-sb 32.1 : 22.9 18th cent.	(RIC)
230.	No seal l n flat oval 32.5 : 24.6 x 19.4 mid. gr. Diamond-engraved Richard Robarts/his hand July 5th 1785	(RIC)
231.	fleur-de-lis/Tho <sup>s</sup> Rich/1787/Over Stowey m n l b. 31.4 : 12 Over Stowey near Bridgewater, Somerset	(Bristol)
232.	T*F/1793 s n l b. 30.4 : 11.3 cf. R-B104	(A. Tomlin Esq.)
233.	John/Newnam (sic) s n m b. 27.5 : 14.8 see no. 234 This bottle, and no 234, were found in the cellars at Mamhead, Devonshire in 1948	(Lady Newman)
234.	John/Newnam (sic) m n m b. 35.9 : 18 18th cent.	(Lady Newman)
235.	C.H./Wansborough/Shrewton s n m b. 33.4 : 17.2 R-B147 Shrewton is near Stonehenge, Wiltshire. "The Wansboroughs were of Dutch extraction and the owner of this bottle was a well-to-do farmer."	(Salisbury)
236.	No seal s n b b. 29.2 : 24.4 mid. gr. Painted and gilt with a named portrait of Admiral Lord Nelson, and coat of arms	(NMM)
237.	MB Davies/1821/Blaenblode s n l b. 30.4 11.5 R-B97 Blaenblodau near Lampeter, Cardiganshire	(Wales)
238.	W. Trease/1821 25 : 16.9 pa. gr. A flagon with decorated handle cf. R-B144 which gives a Thomas Trease of St. Germans, Cornwall, 1815	(S)
239.	D.MC/H. D/1821 l n m b. 30.5 : 14.1 mid. gr. with four equidistant vertical ribbons from shoulder to base	(FMT)
240.	J.S./J.M./STIRLING/1827 m n m b. 29.1 : 12.3 amber-gr. mottled white : with three full length and three half-length vertical ribbons This mottled glass is associated with Nailsea	(V & A)
241.	THO <sup>s</sup> HOLE/1823 s n m b. 30.1 : 14.3	(FMT)
242.	No seal s n l b. 30.7 : 11.2 Painted and gilt with named portrait of Admiral Lord Nelson, and lettered CARRAWY (a volatile oil from Caraway seeds)	(NMM)
243.	No seal m n l b. 36.7 : 16 Capacity 8 pints	(York)
244.	No seal m n m b. 34.1 : 17.8 Capacity 7 pints	(RIC)



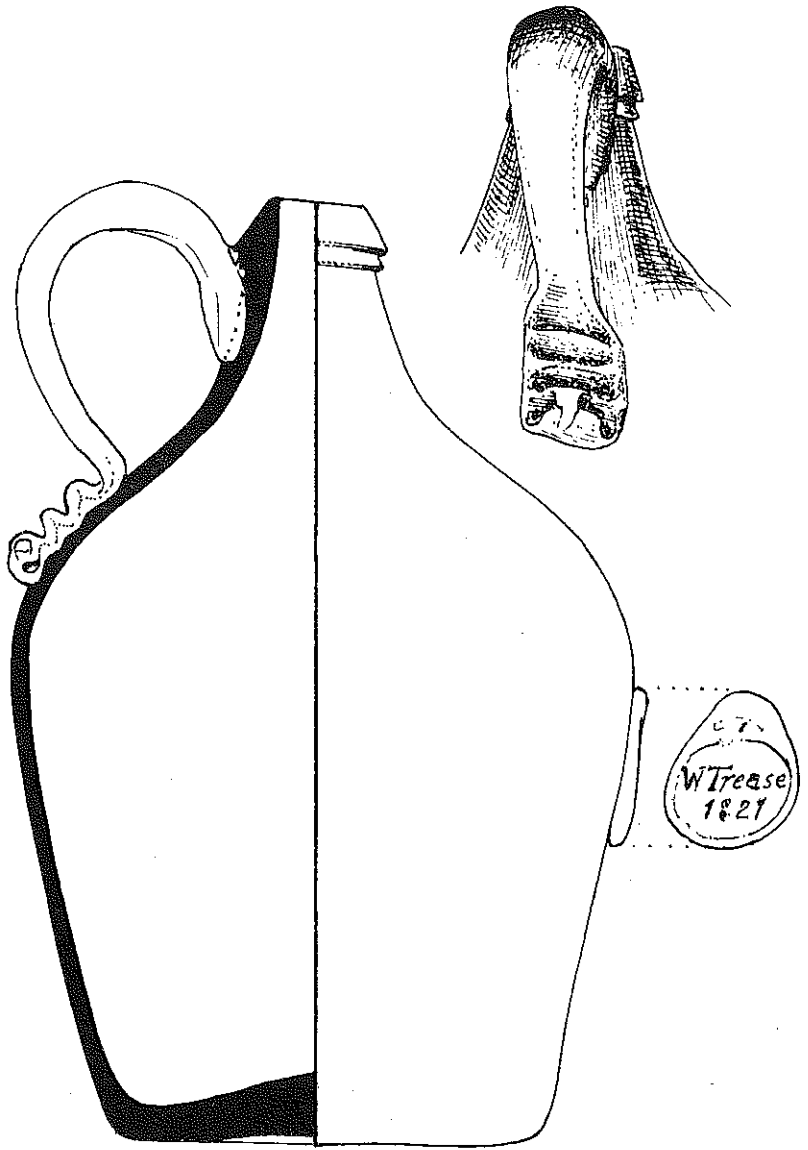
No. 223



No. 224



No. 235



No. 238

**Nos. 245-256. A series of twelve case-bottles of various sizes and colours**

Case-bottles were so-called because they were generally transported in wooden cases, their square section allowing them to be grouped together. Although commonly said to have contained gin, their use was probably not confined to that spirit. The size of these examples varies from 39.3 to 19.9 in height (RIC)

**DETACHED SEALS**

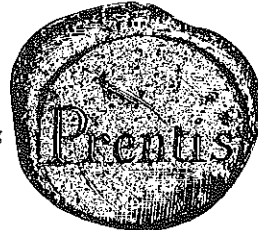
These are often found, during ploughing or gardening, when the remainder of the bottle had disintegrated. Nos. 257-61 were excavated on the site of the colonial capital of Williamsburg, Virginia, having been imported from England. (Ivor Noël Hume in *Journal of Glass Studies*, Vol. 3, 1961)

**257. I/Custis**

John Custis (1678-1729) an Alderman of Williamsburg  
(Williamsburg)

**258. S/Cobbs**

Samuel Cobbs (died 1757) a merchant in Williamsburg  
(Williamsburg)

**259. Prentis**

William Prentis (died 1765) a merchant in Williamsburg  
(Williamsburg)

**260. Jn<sup>o</sup>/Greenhow/Wmsburg/1770**

John Greenhow (1724-87) a merchant in Williamsburg.  
He had three different seals : more than 80 examples  
of this seal have been found there  
(Williamsburg)

**261. I/Tazewell/1768**

(Williamsburg)

John Tazewell (died 1781) a Williamsburg lawyer

**262. W<sup>m</sup> Oliver/Launceston/1691**

(Launceston)

**263. R/ERISEY/93**

Richard Erisey, originally of Erisey in Grade, buried at  
St. Neot, Cornwall in 1700

(P. Berridge Esq.)

**264. R/Erisey**

(P. Berridge Esq.)

**265. J. Webb/1700**

(Plymouth)

Found in a garden in Wolsey Road, Plymouth

**266. Armorial, a chevron between three magpies/H. Tresmarrow P/1703**

(Launceston)

Tresmarrow then within the borough of Launceston with which Hugh Pyper and his family were closely associated

267. Crest, a magpie/Hugh Pyper/1703  
(Launceston)



268. \*/Francis/Smithson/1705 (ringed)  
Smithson of Tottenham, Mx., and Stanwick (J.E. Crowe Esq.)

269. JOHN AVERY. IN. WINTON 1709 around a sun  
with face  
A tavern keeper's seal  
(Winchester)



270. Penhale in Davidstow/arms of Pyper flanked by shrubs/  
Hugh Pyper Esq/1712. See nos. 266 and 267 (Launceston)

271. TFM(TF conjoined)/1712 (Winchester)

272. IS/1728

273. In<sup>o</sup>/Eveleigh/1736 (Plymouth)  
Found in the Barbican area, Plymouth

274. I/Steutheridge/Lostwithie<sup>ll</sup>/1734.  
The will of a Joseph Sturtridge of Lostwithiel was  
proved at Bodmin in 1778  
(RIC)



275. Martin/Lanyon/Liskeard/1734.  
The will of Martin Lanyon of Liskeard was proved  
at Bodmin in the same year  
(R. Holmes Esq.)



276. S.K/1739 (Winchester)

277. Armorial : arms of Wallop impaling Bennet  
John Wallop, later 1st Earl of Portsmouth, married Bridget  
Bennet, daughter of Charles, Earl of Tankerville, in 1716.  
She died 1738  
(Winchester)

278. R/Thomas/Veryan/1765 (T.Trudgian Esq.)  
Veryan, a parish in Cornwall

279. R/Thomas/Veryan/1765 identical with 278 (T.Trudgian Esq.)

280. H/Hambly/1768 (MP)

281. Geo:/Martyn/St<sup>t</sup> Teath/1771 (MP)  
St. Teath, a parish in North Cornwall



282. T. Rivers/Truro/1785 (DG)  
Thomas Rivers moved to the King's Head Inn, one  
of the biggest in Truro, in 1783



283. T./Andrew/1799 (W.C.T.)  
Probably the Andrew family of St. Eval, Cornwall Hellyer Esq.)  
284. T./Andrew/1799 (W.C.T.)  
See no. 283 Hellyer Esq.)  
285. I\*L/1808 (Winchester)  
286. T. Grose/St Kew/1820 (MP)  
See no. 166.

287. A fouled anchor  
Found in the parish of Constantine, Cornwall  
(D.M. Horsford Esq.)



288. B./I.E (Poole)  
289. R./Gros[e]/St Kew (MP)  
See nos. 166 and 285  
289a. R./Grose/St Kew (MP)  
A different engraving to 288  
290. \*/\*\*Dunardry/\*\*/\* (Launceston)  
291. J./Worden/St Kew (MP)  
See no. 147, an identical seal

292. The Rev<sup>d</sup>/EG/St Erth (RIC)  
The Rev. Edward Giddy of Tredrea in St. Erth,  
died 1814. This seal was found in the River Fal  
by an oyster-fisherman



293. F. Peter (FP conjoined)/St/Merryn (W.C.T.)  
Hellyer Esq.)  
294. Identical with 293 (W.C.T.)  
Hellyer Esq.)  
295. B./WI (Poole)  
Found in Orchard car-park, Poole, 1973  
296. S/Read./((flourish) (MP)  
297. C. Menhinick. (in circle) (MP)  
The Menhinick family was associated with the parishes of St. Mabyn,  
Egloshayle and others neighbouring  
298. R./Bake (MP)  
A name particularly associated with the slate quarries at Delabole  
in the parish of St. Teath, Cornwall. Robert Bake gent died in 1810,  
aged 84

## PHARMACEUTICAL BOTTLES

At an early date, glass was found to be very suitable for making bottles and many other articles for pharmaceutical purposes. From the eighteenth century large vessels were made for exhibiting in chemists' shop windows: when filled with coloured liquids they made such premises outstanding. For the convenient storage of powders and liquids the pharmacy was equipped with neatly labelled stoppered bottles, clear glass ones for most purposes and coloured bottles for poisons. Medicines were for long supplied in single-dose bottles, and it was not until the Victorian era that those to hold a dozen or more doses came into use.

299. Handled bottle : Roman. The body partially hooped (V & A)  
18.1 : 8.1 | pa. gr. irid. Found at Amiens : indistinctly  
moulded on base FRONTIN O  
This mould-blown bottle was made by Frontinus who flourished  
at Boulogne or Amiens in the 3rd/4th centuries A.D.
300. Handled bottle : Roman : with five shallow raised rings (RIC)  
s n. sq. 12.9 : 6.8 Mould-blown : amber-coloured  
Found in a tomb at Tiberias
301. Handled bottle : Roman. The body tapering to base which (RIC)  
is engraved with a series of rings. pa. gr. | s n. 22 : 8.5  
Believed to have been found in London
302. Pharmacy bottle | s n 1 b. 15.5 : 9.5 pa. gr. 17th century (V & A)
303. Pharmacy bottle | s n 1 b. body expanding to foot (V & A)  
13.7 : 8.8 pa. gr. 17th century
304. PYRMONT WATER and elaborate crowned coat of (V & A)  
arms | s n. body tapering to base. 23 : 13.7 mid. gr. A  
Continental bottle  
Diamond-engraved on neck-Rowe. Water from the mineral  
springs at Pyrmont in Germany was exported to England and  
farther afield. Seals similar to this have been found in Virginia
305. Bottle, sealed with cork-lined crown cap, with original (C)  
contents 30.4 : 8.7 mid. gr. 20th century  
The paper label announces it to contain Vichy Water, a mineral  
water from Vichy in central France
306. Rig Bals m n. flat 12.6 : 7.9 x 1.9 pa. gr. (York)  
Lady Ruggle-Brise recorded the small seal on this flat flask as  
Pig Bag. She wrote to *The Sunday Times* about the meaning of  
this legend and received many replies, but none was considered  
satisfactory. In fact, the inscription, in a scrawly script, reads  
Rig Bals (Riga Balsam, as in no. 307). *The Chemist and Druggist*  
of March 5, 1887, under Trade Notes gives:— "We have received  
samples of the "real Riga Kreuter Balsam" manufactured by Mr.  
A. Wolfschmidt, of Riga, whose agents in this country are Messrs.  
Meyer & Co., Savage Gardens, Tower Hill, E.C.

(continued)

continued from page 34

The balsam is made in two colours, golden and brown, and is put up in circular flat flasks, such as are frequently inquired for by the public. The balsam is palatable, and acts as a powerful carminative internally, and is used externally for various purposes." See also an article on Riga Balsam by Dr. D.A. Wittop Koning in Pharmaceutisch Weekblad 109-1974. (With thanks to G.J. Hendra, Esq. and The Pharmaceutical Society of Great Britain).

See illustration on page 41.

307. RIGA BALSAM | m n. flat 11.2 : 7.5 x 3 pa. gr.  
Bears a more modern paper label of Butland,  
Druggist, Tea Dealer and Stationer, Shaldon (Devon)  
(A. Tomlin Esq.)



308. Show bottle as displayed, filled with coloured water, (C)  
in a pharmacist's shop-window | n b b. 107 : 34 clear.  
The spire-shaped runnelled stopper is cut with flat  
surfaces. 19th century
309. Show bottle, as 308 | n b b. 51 : 30.5 clear : faceted (C)  
stopper. 19th century
310. Show bottle as 308 | n b b. 81 : 28 mid. gr. hollow- (H)  
stopper : contemporary
311. Carboy : usually packed in wicker containers for (DG)  
transporting liquids in bulk | s n b b. 70 : 43 mid. gr.  
early 20th century
312. Carboy | s n b b. 55 : 40 pa. gr. mould-blown : modern (H)
313. Bottle of carboy type | m n b b. 28.7 : 21 : clear (H)
314. Storage bottle | s n l b. 59 : 22.3 mid. gr. (C)
- Nos. 315-320 A group of six chemists' shelf storage bottles in three sizes.  
All with painted gilt labels and square-cut stoppers. Clear : cyl.
321. Chemists' shelf bottle with cut label and square-cut stopper (H)  
19.4 : 7.8 cyl. clear
- Nos. 322-337 A group of sixteen shelf bottles in three sizes, all with labels  
lettered within gilt borders and back-painted in inset panels cyl. clear
338. Chemists' shelf bottle similar to last, but with the hollow (C)  
knob cover concealing a stopper topped by a measure 22 :  
7.6 cyl. clear
- Nos. 339-40 Two shelf bottles, with knob-stoppers, and with painted and  
gilt labels cyl. clear
- Nos. 341-343 Three shelf bottles, with faceted stoppers cyl. clear
344. Shelf bottle. Stopper with rectangular finial : (H)  
label etched and painted 17.9 : 7.3 x 8 rect. clear
345. Shelf bottle. Stopper with rectangular finial 13.6 (H)  
: 6.1 cyl. clear
346. Shelf bottle. Stopper with rectangular finial: back-painted (S)  
glass label 24 : 10.2 ribbed cyl. mid. gr.
347. Shelf bottle: similar to 346 but with painted and gilt (H)  
label 18.5 : 8.3 ribbed cyl. mid. gr.
348. Shelf bottle : similar to 347 14.2 : 5.2 ribbed cyl. mid. gr. (S)
349. Shelf bottle. With loose-fitting stopper, painted and gilt (C)  
label. Bottle designed to contain syrup. 23.5 : 8.5 cyl bl
350. Shelf bottle 22 : 8.6 cyl. bl (DG)

- Nos. 351-3 Three shelf bottles. br. (H)
- Nos. 354-6 Three Ship's Dispensary Medicine Bottles from (B. Sullivan Esq.)  
the Plymouth Dockyard, all marked with a broad arrow and each  
with a distinguishing number, 4, 5 or 8, clear : square section
- Nos. 357-376 A group of bottles from one of the two medicine (RIC)  
chests supplied from Woolwich to Richard and John Lander for their  
expedition to the Niger in 1830-1. Most of the stoppers are still protected  
by the original kid-leather. Some of the painted and gilt labels read :—  
Eau de Luce : Aloetic Wine : Dover's Powder : Opoldeldoc : Oil of  
Juniper : Laudanum : Spirits of Wine : Epsom Salts
- Nos. 377-386 A group of bottles from the personal travelling (RIC)  
medicine chest of Jonathan Rashleigh, the brass plate on the chest  
giving his name and the date 1852. All stoppered and most protected  
by the original kid-leather. The paper labels are of G. Waugh & Co. 177  
Regent Street, London. The medicaments are Syrup of Senna : Tincture  
of Rhubarb : Tincture of Henbane : Ipecacuanha : Powdered Jalap :  
Genuine Powder of Turkey Rhubarb : True James's Powder : Blue Pills :  
Brandy
- Nos. 387-398 A group of twelve blue bottles to contain POISON.  
Owing to the prevalence of accidents much ingenuity was exercised in  
designing bottles of a distinctive colour, shape and surface, so that they  
could not easily be confused with others. Perhaps this had the corresponding  
disadvantage in making such bottles in themselves more attractive to children
- Nos. 399-400 Two brown POISON bottles : modern
- Nos. 401-413 Green POISON bottles : modern
- Nos. 414-415 Two pa. gr. oval ribbed bottles lettered POISONOUS NOT  
TO BE TAKEN
- Nos. 416-417 Two pa. gr. oval ribbed bottles lettered BURDALL'S LTD.  
MANUFACTURING CHEMISTS SHEFFIELD. NOT TO BE TAKEN  
INTERNALLY
- Nos. 418-421 Chemists' storage jars for lozenges, labelled ROBERT GIBSON  
MEDICAL LOZENGE MAKER, MANCHESTER : BROMPTON  
COUGH LOZENGES; MENTOL AND OIL OF EUCALYPTUS  
PASTILLES : CARBOLIC ACID LOZENGES
- Nos. 422-435 Medicine bottles with graduated markings : (DG : C)  
modern
- Nos. 436-453 Medicine bottles with the supplier's name in relief,  
all probably 20th century
436. DR. W.L. STEWART. (DG)  
Dr. Stewart practised in Grampond
437. L.H. DAVIES CHEMIST CARMARTHEN (C)
438. W.H. BUCHER PHARMACEUTICAL CHEMIST TRURO (DG)
439. W.T. DAWES MEDICAL HERBALIST PLYMOUTH (C)
440. BALKWILL & CO. PLYMOUTH (C)
441. BALKWILL & CO. CHEMISTS PLYMOUTH (C)
442. R.A. POTTS PHARMACIST, 62 SOUTH AUDLEY (C)  
STREET W.
443. SHELLEY RICHARDS PHARMACIST WEYMOUTH (C)
444. F.A. GOODWIN, 79 MUTLEY PLAIN & 20 EBRINGTON (C)  
STREET
445. C.A. PRATT CHEMIST SALTASH (DC)
446. BOOTS CASH CHEMISTS (DG)
447. BOOTS CASH CHEMISTS (C)
448. TIMOTHY WHITE CO. LTD. THE RELIABLE CASH (DG)  
CHEMISTS
449. BARGE PLYMOUTH (DG)

450. ROBERTS & CO. PHARMACIENS LONDON & PARIS (C)  
ESTABLISHED 1820
451. TIMOTHY WHITE & CO. (MM)
452. FELLOWS & CO. CHEMISTS ST. JOHN N.B. (DG)  
(New Brunswick, Canada)
453. TIMOTHY WHITE CASH CHEMIST. POISONOUS (MM)  
Nos. 454-487 Proprietary medicines and preparations
454. Rect. chamf. 17.5 : 6.5 x 3.8 pa. gr. ENO'S FRUIT SALT (DG)
455. Oval. 18.5 : 7.7 x 3.7 : mid. br. WARNER'S SAFE CURE, (SH)  
LONDON
456. Rect. 18.6 : 6.2 x 3.7 pa. gr. DR. KILMER'S SWAMP (DG)  
ROOT KIDNEY LIVER AND BLADDER MEDICINE  
LONDON E.C.
457. Rect. chamf. 18.7 : 6.3 x 4 pa. bl. CLARKE'S WORLD (DG)  
FAMED BLOOD MIXTURE LINCOLN
458. Sq. chamf. 18.1 : 5.2 dk. gr. DAY, SON & HEWITT'S (DG)  
THE ONLY GENUINE CHEMICAL EXTRACT LONDON
459. Rect. chamf. 15.9 : 5.9 x 3.4 pa; gr; CAREFULLY (C)  
PREPARED BY KEYBELLS DERBY
460. Oval. 13.5 : 5.4 x 3.3 pa. gr. MACDONALD STEAM (DG)  
SYSTEM POISONOUS
461. Rect. 16.3 : 6.1 x 4.1 mid. br. DR. WILSON'S HAIR (D)  
RESTORER
462. Sq. 19.8 : 5.8 pa. gr. DAY & SONS CREWE. THE ONLY (DG)  
GENUINE PURIFIED DRIFFIELD OILS
463. Rect. chamf. 15.7 : 6 x 3.5 mid. bl. PLYMOUTH HAIR (D)  
RESTORER
464. Rect. chamf. 15.2 : 6.1 x 3.6 pa. gr. LAMPLOUGH'S (DG)  
EFFERVESCING PYRETIC SALINE
465. Rect. chamf. 15.9 : 5.9 x 3.6 clear. OWBRIDGE'S LUNG (DG)  
TONIC
466. Rect. chamf. 12.2 : 6 x 4.2 pa. gr. KUTNOW'S POWDER (DG)
467. Cyl. 15.8 : 7.7. amber. BRIGHTON SELTZER H.D. (DG)  
RAWLINGS LTD.
468. Rect. chamf. 13.7 : 5 x 2.8 pa. gr. VENO'S LIGHTNING (DG)  
COUGH CURE
469. Cyl. 11.5 : 3.4. clear. PHOSFERINE (C)
470. Sq. 8.9 : 2.3 clear. CONGREVE'S BALSAMIC ELIXIR (C.C.Macdonald  
FOR CONSUMPTION, COUGHS, ASTHMA, (Esq.)  
BRONCHITIS AND WHOOPING COUGH
471. Rect. 12.7 : 4.3 x 2.7 pa. bl. OWBRIDGE'S LUNG (DG)  
TONIC, HULL
472. Oval. 17.1 : 6.9 x 3.5 pa. gr. DINNEFORD'S MAGNESIA (DG)
473. Oval. 16.1 : 7.5 x 4 pa. gr. FELLOWS SYRUP OF (DG)  
HYPOPHOSPHITES
474. Rect. chamf. 14.2 : 5;7 x 3.4 pa. bl. BISHOP'S (DG)  
GRANULATED CITRATE OF CAFFEINE
475. Rect. chamf. 16.3 : 6.1 x 4.1. dk. bl. GRANULAR (SH)  
CITRATE OF MAGNESIA
476. Rect. chamf. 15.4 : 6.1 x 3.6 mid. bl. GRANULAR (D)  
CITRATE OF MAGNESIA
477. Rect. 14.2 : 4.4 x 2.5 clear. CALIFIG SUCCESSORS TO (DG)  
THE CALIFORNIA FIG SYRUP CO.
478. Cyl. 11.8 : 3 pa. gr. MRS. WINSLOW'S SOOTHING (D)  
SYRUP CURTIS & PERKINS PROPRIETORS

479. Cyl. 15 : 3.4 pa. gr. ST. JACOB'S OIL THE CHARLES (DG)  
AVOCLEL COMPANY LONDON
480. Rect. chamf. 14.7 : 5.2 x 2.9 pa. gr. ELLIMAN'S (DG)  
EMBROCATION
481. Rect. chamf. 12 : 4.5 x 3 pa. bl. HAYMAN'S BALSAM (DG)  
OF HOREHOUND
- Nos. 482-3 Oval. 12 : 6.5 x 3.4 bl. and br. OPTREX EYE (S)  
LOTION, with accompanying trade announcement — "Unfortunately  
blue glass is no longer available. We've chosen amber glass to replace it,  
etc."
484. Rect. rd. 8.2 : 3.5 x 2.1 mid. br. SOTOL MOUTH WASH (DG)  
TABLETS
485. Cyl. 10.9 : 3.9 clear. LANGDALE'S CONCENTRATED (DG)  
MEDICINAL ESSENCE OF CINNAMON
486. Rect. chamf. 10.5 : 5.2 x 2.4 white ODOL (a dentifrice) (CH)
487. Rect. chamf. 10.5 : 5.2 x 2.4 white ODOL (a dentifrice) (MM)
488. Rect. chamf. 15.4 : 5.3 x 3 pa. gr. E. RIMMEL (perfume) (DG)
489. Cyl. top. 18.7 : 3.3 mid. gr. (perfume) (MM)
490. Cyl. top. 23.9 : 3.3 mid. gr. with paper label EAU DE (V & A)  
COLOGNE DE JEAN MARIE FARINA LE PLUS ANCIENT  
DISTILLATEUR DE LA PLUS VERITABLE EAU DE  
COLOGNE etc.
491. Rect. chamf. 7.5 : 3.7 x 2.5 mid. gr. (MM)
492. Cyl. 22.8 : 5.5 pa. bl. FLORIDA WATER MURRAY & (C)  
LANMAN DRUGGISTS, NEW YORK
493. Cyl. 24.3 : 6.3 mid. br. HALL'S WINE TONIC (D)
494. Sq. 9.4 : 2.5 pa. gr. GOOD IT'S MASONS (D)
495. Oval. 7.2 : 2.5 x 1.8. pa. bl. MASON'S WINE ESSENCES (DG)
496. Oval. 12.8 : 4.7 x 2 mid. bl. MASON'S WINE ESSENCES (C)  
NOTTINGHAM
497. Oval. 12.9 : 4.9 x 3 pa. bl. MASON'S WINE ESSENCES (DG)  
NOTTINGHAM
498. Cyl. 12.6 : 4 pa. bl. MASON'S EXTRACT (DG)
499. Oval. 13. : 5 x 3 pa. br. MASON'S WINE ESSENCES (DG)
500. Cyl. 26.1 : 8.7 mid. gr. (on the base) TONALKA (DG)
- Nos. 501-511 Veterinary preparations (DG)
501. Rect. chamf. 20.2 : 8.2 x 5 pa. bl. J. STEPHENS MRCVS (DG)  
PENZANCE
502. Rect. chamf. 16.2 : 6.5 x 4.1 pa. bl. T. OLVER MRCVS (SH)  
TRURO
503. Rect. chamf. 19.3 : 7.4 x 4.1 pa. gr. CATALINE DRENCH (DG)
504. Sq. 13.5 : 3.4. pa. gr. WALTER GREGORY'S ETHELYNE (CH)  
FLUID FOR CATTLE
505. Cyl. 18.4 : 6.5 pa. gr. ELLIMAN'S ROYAL (DG)  
EMBROCATION FOR HORSES MANUFACTORY SLOUGH
506. Oct. 19 : 6.4 pa. gr. BENBOW'S DOG MIXTURE (DG)
507. Cyl. 21 : 6.5. mid. br. TIPPERS VITALIS THE BEST (DG)  
DRINK FOR ALL ANIMALS (with swing stopper)
508. Cyl. 21 : 6.5. clear (as 507) (DG)
509. Cyl. 18.1 : 6.4 pa. gr. "VITALIS" TIPPERS (D)  
DIFFUSIBLE STIMULANT, BIRMINGHAM
510. Rect. 21.5 : 9.2 x 4.7 pa. gr. POISONOUS NOT TO BE (C)  
TAKEN
511. Rect. chamf. 24.8 : 10.8 x 6.8 pa. bl. (C)

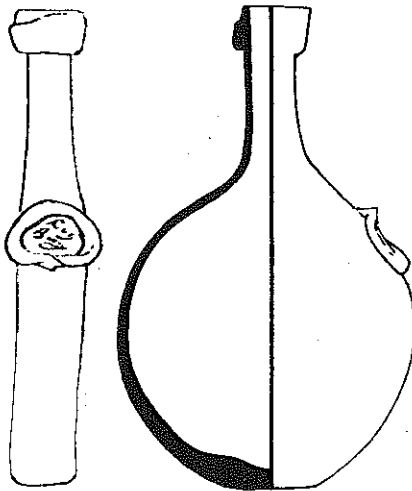
Nos. 512-529 Phials of indeterminate use, some for essences, extracts and tinctures.

530. Child's feeding bottle 15.1 : 9.6 clear. INFANTS (Anon)  
COMPANION FEEDER
531. Child's feeding bottle 13.9 : 9.5 pa. gr. FAIRBURN (MM)  
CHEMIST GUISBORO
532. Child's feeding bottle 20.5 : 7.8 clear. H. GILBERTSON (SH)  
& SONS, LONDON
533. Child's feeding bottle 18.9 : 7.2 clear. THE HYGIENIC (DG)  
FEEDER
534. Child's feeding bottle 13.6 : 5.7 clear. BOOTS THE (DG)  
CHEMISTS
535. Storage bottle 16 : 8 pa. gr. MELLIN'S INFANTS' FOOD (DG)  
LONDON
536. Graduated medicine dispenser? 15.7 : 7.5 clear. (MM)  
S. MAW, SON & SONS, LONDON, ENGLAND
537. Grape storage bottle, for storing and feeding cut bunches (RIC)  
of grapes designed to sit horizontally: with long neck and  
top feeding hole. 31.2 : 6.3 pa. gr. WM. WOOD & SON LTD.  
WOODGREEN
- Nos. 538-542 Five ink-bottles with grooved pen-rests. Such bottles were made  
very cheaply of bubbly glass with the necks sheared and raw
- Nos 543-549 Seven ink-bottles
550. Ink-bottle, for supply. cyl. 19.7 : 17.7 pa. gr. (SH)  
STAFFORDS INK
- Nos. 551-558 Eight small bottles, probably for ink or gum
559. THE IMPROVED HARDEN STAR GRENADE FIRE (The National  
EXTINGUISHER (Trust)  
A set of three in original wire carrier. The grenades are  
globular, vertically ribbed, short-necked 16.4 : 11 bl.
560. Oval. 20 : 8.2 x 4.7 pa. gr. SCRUBB'S FLUID (DG)
561. Rect. 12.7 : 5 x 3.4 pa. gr. WILLIAM H SAMUEL & CO. (DG)  
ORBIT BOOT POLISH
562. Cyl. 15.3 : 5.8 pa. gr. WALKER & HALL (SH)  
INSTANTANEOUS PLATE CLEANER
563. Oval. 10.1 : 4.7 x 3.2 pa. gr. EDWARD MANWARING (D)
564. Rect. 15.7 : 6 x 2.9. pa. gr. JEYES FLUID (DG)
565. Sq. chamf. 12.5 : 4.3 pa. gr. HAWTHAWAY'S PEERLESS (DG)  
GLOSS MADE IN U.S.A.
566. Rect. 15 : 5.5 x 3.3 pa. gr. WHITAKER & CO. COLOUR (MM)  
WORKS KENDAL ENGLAND
567. Sq. 12 : 3.5 pa. gr. DAY SON AND HEWITTS LONDON (D)  
THE ONLY GENUINE GASEOUS FLUID
568. Rect. chamf. 14.7 : 5.4 x 3.5 pa.gr. JAMES RUDMAN (SH)  
BRISTOL STAINOLEUM
569. Cyl. 11.7 : 5.1 pa. bl. STEPHENSON BROTHERS (DG)  
FURNITURE CREAM
570. Rect. 13.2 : 5.4 x 3.7 pa. bl. NUBIAN (SH)
571. Cyl. 38.2 : 8.3 clear. ESSOLUBE (M.Tillson Esq.)
- Nos. 572-575 m n b b. mid. br. Four BOVRIL
576. Flat egg. 8 : 4.8. mid. br. VALENTINE'S MEAT JUICE (CH)
- Nos. 577-578 mid. br. probably contained meat extracts (DG)
579. Sq. 16.5 : 4.2 pa. gr. PATERSON'S ESS. "CAMP" (DG)  
COFFEE & CHICORY

580. Sq. 15.2 : 4.4 pa. gr. PATERSON'S CAMP COFFEE (DG)  
GLASGOW
581. Sq. 21.7 : 5.1 pa. gr. PATERSON'S ESS. "CAMP" (DG)  
COFFEE & CHICORY
582. Sq. 17.1 : 3.6 pa. gr. BRANSON LTD. COFFEE (DG)  
EXTRACT
583. Sq. 20.8 : 5.1 dk. gr. S.C.W.S. SHIELDHALL ESSENCE (DG)  
OF COFFEE & CHICORY
584. Tr. 19.5 : 5.9 mid. br. CAFE' VIERGE (DG)
585. Sq. 11 : 4. pa. gr. PEARCE DUFFS YO-YO (CH)  
LEMONADE CRYSTALS
586. Rect. 10.8 : 4.2 x 3.2 pa. gr. BIRDS LEMONADE (DG)  
ALFRED BIRD & SONS LTD. BIRMINGHAM
587. Sq. 10.6 : 3.5 pa. gr. EIFFEL TOWER LEMONADE (D)  
FOSTER CLARKE LTD. MAIDSTONE
588. Sq. 10.6 : 3.5 pa. gr. EIFFEL TOWER LEMONADE (DG)  
FOSTER CLARKE LTD. MAIDSTONE
589. Sq. 13.5 : 5.2 pa. gr. FOSTER CLARKE LTD. (DG)  
MAIDSTONE
590. Rect. 9.9 : 4.5 x 3.2 clear. CHIVERS & SONS LTD. (DG)  
HESTON CAMBRIDGE THE CAMBRIDGE LEMONADE
591. Rect. 9.7 : 4.2 x 3 pa. gr. CHIVERS & SONS LTD. (CH)  
HESTON CAMBRIDGE THE CAMBRIDGE LEMONADE
592. Cyl. 21.2 : 7.8 clear.(one pint). R. HALL FERRY BERE (M.Tillson Esq.)  
ALSTON. HALL'S TUBERCULIN TESTED AWARDED  
GOLD MEDAL CLEANEST MILK IN DEVON
593. Cyl. 15.5 : 6.4 clear (half pint) milk. PLEASE RINSE (CH)  
AND RETURN
594. (DG)
595. Sq. 21 : 4.4. pa. gr. GARTON'S H.P. SAUCE (DG)
596. Sq. 21 : 4.5 pa. gr. GARTON'S H.P. SAUCE (DG)
597. Sq. 21 : 4.5 pa. gr. GARTON'S H.P. SAUCE (DG)
598. Sq. 21 : 4.4 mid. gr. GARTON'S H.P. SAUCE (DG)
599. Sq. 21 : 4.4 pa. bl. GARTON'S H.P. SAUCE (DG)
- 600.
601. Cyl. 29 : 8.2 clear. FLAG SAUCE (DG)
602. Sq. 30.3 : 7.4 pa. gr. FLAG SAUCE (DG)
603. Sq. 31.1 : 3.7 clear. FLAG SAUCE (DG)
604. Cyl. 19.6 : 5.2 pa. gr. MELLOR & CO. WORCESTER (DG)
605. Cyl. 18.5 : 5.4 pa. gr. LEA & PERRINS (DG)  
WORCESTERSHIRE SAUCE
606. Cyl. 21.8 : 5.9 clear. HOLBROOK & CO. (DG)
607. Sq. 20.7 : 4.5 pa. gr. DADDIES FAVOURITE SAUCE (CH)
608. Sq. 19.5 : 4.4 clear. DADDIES SAUCE (DG)
609. Sq. 18.5 : 4.1 clear. MASONS OK SAUCE (DG)
610. Sq. 14.3 : 3.5 pa. gr. GRANNY'S DELICIOUS SAUCE (DG)
611. Sq. 15.6 : 3.6 pa. gr. GRANNY'S QUALITY SAUCE (DG)
612. Sq. 15.7 : 3.5 clear. GRANNY'S BEST QUALITY SAUCE (DG)
613. Sq. 21 : 4.4 pa. bl. GRANNY'S DELICIOUS SAUCE (DG)
614. Sq. 21.4 : 4.6 pa. bl. GRANNY'S DELICIOUS SAUCE (DG)
615. Sq. 21.4 : 4.6 pa. gr. GRANNY'S DELICIOUS SAUCE (DG)



616. Sq. 21.5 : 5.5 pa. gr. LIPTON LTD. LONDON & CEYLON (DG)  
 617. Dodec : ornamental 26.8 : 6 pa. gr. CHAMPION & SLEE (SH) LTD.  
 618. Sq. 14.4 : 3.8 pa. gr. probably designed for sauce (DG)  
 619. Cyl. 17.3 : 4.3 sauce or bitters (DG)  
 620. Sq. 20.7 : 4.9 pa. gr. sauce, relish or bitters (DG)  
 621. Cy. 23.2 : 5.9 pa. gr. sauce, relish or bitters (DG)  
 622. Cyl. 19.2 : 4.8 pa. bl.sauce, relish or bitters (DG)  
 623. Cyl. 18.8 : 4.7 pa. gr. sauce, relish or bitters (DG)  
 624. Cyl. 7.2 : 4.2 pa. gr. sauces, relish or bitters (DG)  
 625. Oval 17.5 : 7.4 x 4.7 pa. gr. BURGESS "MM" PICKLE (jar) (DG)  
 626. Cyl. 19.8 : 6 pa. gr. J.A. SHARWOOD & CO. LIMITED (CH)  
 CALCUTTA & LONDON (jar)  
 627. Sq. 18.7 : 7.5 pa. gr. paper label G. DIXON & SONS (W.A. Ball Esq.)  
 TRURO FAMILY PICKLES (jar)  
 628. Sq. 15 : 5.6 pa. gr. (jar) (DG)  
 629. Sq. 13.8 : 6.4 pa. gr. THE ALVINIA PICKLE (jar) (DG)  
 630. Cyl. 26.3 : 8 pa. gr. THE ORIGINAL SHIP BRAND (D)  
 CHUTNEY MANUFACTURED IN BOMBAY (jar)  
 631. Cyl. 14 : 7 pa. gr. MASONS OK PICKLE (jar) (CH)



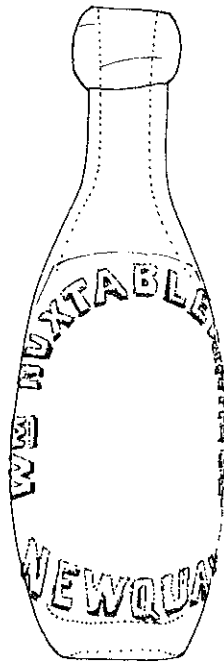
No. 306

## BEER AND MINERAL WATER BOTTLES

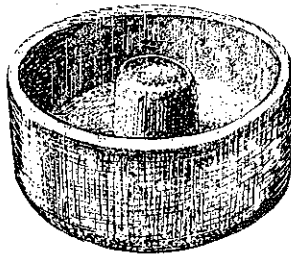
It is appreciated that bottles for medicinal and household use, as containers for spirits, beer or mineral water offer such enormous scope that this display is only a selection, suggesting how wide the range is. The story of brewing in Cornwall still continues with the Redruth and St. Austell Breweries, and the history remains to be written. Aerated waters in imitation of those from natural sources, such as Pymont and Vichy, became popular in the early nineteenth century. Storage was complicated because a dry cork would have allowed the gas to escape. To ensure that the cork remain moist, William Hamilton in 1814 produced the torpedo-shaped bottle which would not stand up. In 1875 Hiram Codd patented a bottle with a constricted neck in which a trapped glass 'marble' was forced by pressure of the gas against a rubber washer. A simple turned wood cap was available for pushing down the closure, but thirsty individuals impatiently used any suitable instrument. Many ingenious variations on Codd's original idea were later marketed.

632. Hamilton mineral-water bottle of the shape devised (DG)  
by William Hamilton in 1814. plain 23.5 : 7.1 pa. gr.
633. Flat Hamilton mineral-water bottle. plain. 20.3 : 6.2 pa. gr. (DG)
634. Codd bottle with closure devised by Hiram Codd and (DG)  
patented in 1875. This specimen, CODD'S BOTTLE EXTRA  
STRONG GLASS, would appear to be a traveller's sample  
22.3 : 6.8 pa. gr.
635. 20.9 : 6.5 pa. gr. ALLEN & CO. FALMOUTH & (DG)  
CAMBORNE  
John Allen & Co. appear at Falmouth in Directories 1926-35
636. 21 : 6.5 clear. J. ALLEN & CO. LTD. FALMOUTH (DG)
637. 19.4 : 5 clear. J. ALLEN & CO. LTD. FALMOUTH (DG)
638. 19.5 : 5.8 clear. J. ALLEN & CO. LTD. FALMOUTH (PS)
639. 29 : 8 pa. gr. J. ALLEN & CO. FALMOUTH & (DG)  
CAMBORNE (with swing stopper)
640. 27.5 : 8.1 mid. br. J. ALLEN & CO. FALMOUTH & (PS)  
CAMBORNE (with swing stopper)
641. 28.3 : 8.3 mid. br. J. ALLEN & CO. LTD. FALMOUTH (DG)  
(with swing stopper)
642. 29.2 : 8 mid. gr. J.H. ALLEN & CO. CAMBORNE (with (DG)  
swing stopper)
643. Codd. 23 : 6.7 pa. gr. ALLMAN'S BANDON (Kilner) (DC)
644. Flat Hamilton 18.5 : 6 pa. gr. ANSTICE & CO. (CH30)  
PLYMOUTH
645. Hamilton 18.8 : 6.4 pa. gr. ANSTICE & CO. PLYMOUTH (Anon)
646. Codd. 22.8 : 6.7 pa. gr. ANSTRUTHER AERATED (DC)  
WATER CO. (Riley)

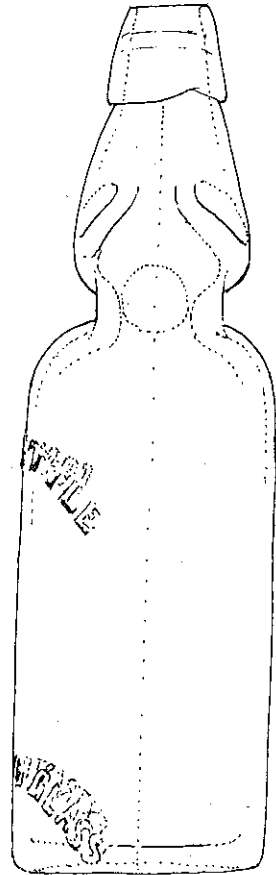
647. Codd. J.H. APLIN CHEMIST TROWBRIDGE, THE (DG)  
NIAGARA BOTTLE 22.4 : 6.5 pa. gr.
648. BASKER & CO. BRIDGWATER CARDIFF & PLYMOUTH  
22.7 : 6.3 pa. gr. screw-top. (Riley)
649. THOMAS BEARE WINE & SPIRIT STORES TRURO (DG)  
19.4 : 7 mid. gr. ½ pint beer
650. E. BOWHAY & BROS BREWERS ALBASTON (PS)  
19.7 : 7 dk. gr. ½ pint beer  
Brewers at Albaston in Gunnislake, Cornwall : name appears  
in Directories 1856-1935
651. Identical to 650 (Rev. G.  
Ruming)
652. H. BUCK TRURO 20.3 : 7.9 ½ pint beer (P and RB) (DG)
653. CAMPBELL PRAED & CO. LTD. WELLINGBOROUGH (JW)  
23 : 6.2 pa. bl. patent stopper (SWG Co.)
654. Codd. CARNE FALMOUTH TRURO 19.6 : 5.7 pa. gr. (PS)  
(P & R Bristol)  
Brewers in Falmouth and Truro : name appears in  
Directories 1893-1919
655. Codd. CARNE FALMOUTH TRURO 23.2 : 6.3 pa. gr. (DG)  
(SWG Co.)
656. Codd. CARNE FALMOUTH TRURO 23.4 : 6.3 pa. gr. (DG)  
(P & R Bristol)
657. Codd. CARNE FALMOUTH TRURO 23.0 : 6.3 pa. gr. (PS)  
(SWG Co.) : complete with opener
658. W & E.C. CARNE TRURO AND FALMOUTH AERATED (PS)  
WATERS 18.9 : 6.9 pa. gr.
659. Inscribed as 658 18.5 : 6.8 pa. gr. (DG)
660. Inscribed as 658 18.8 : 6.9 pa. gr. (DG)
661. Inscribed as 658 19 : 6.8 pa. gr. (MM)
662. CARNE FALMOUTH TRURO 22.2 : 6.3 pa. gr. (DG)
663. Inscribed as 662 22.4 : 6.2 pa. gr. (MM)
664. W & E.C. CARNE TRURO 22.7 : 6.3 pa. gr. internal (DG)  
screw-top : (Barrett & Elers London)
665. CARNE FALMOUTH TRURO 20.6 : 6.3 gr. ½ pint (Lumb)(PS)
666. Inscribed as 665 20.6 : 6.3 gr. ½ pint (CS & Co. Ltd.) (PS)
667. Inscribed as 665 21.5 : 6.2 gr. ½ pint (P & R Bristol) (PS)
668. Inscribed as 665 21 : 6.3 gr. ½ pint (P & R Bristol) (PS)
669. Inscribed as 665 26.7 : 7.5 gr. 1 pint (P & R Bristol) (PS)
670. Codd. R. CLEAVE BARNCOOSE REDRUTH (DG)  
20.0 : 5.7 pa. gr. (Rylands)  
Mineral water manufacturers as Hocking and Cleave in  
Directories 1906-14 and as Richard Cleave 1919-30
671. Codd : inscribed as 670. 22.5 : 6.4 pa. gr. (Rylands) (PS)
672. Inscribed as 670 20.7 : 6.3 pa. gr. internal screw (Rylands) (PS)
673. Inscribed as 670 21.7 : 6.2 pa. gr. (JL & Co. Ltd.) (DG)
674. Inscribed as 670 20.7 : 6 clear (CTG) (PS)
675. Codd. HOCKING & CLEAVE BARNCOOSE REDRUTH (PS)  
18.2 : 5.6 pa. gr. (Rylands)
676. Codd. COOMBES & SON WADEBRIDGE 23.3 : 6.3 pa. gr. (PS)  
(Powell Bristol)  
Mineral water manufacturers in Directories 1893-1914
677. Inscribed as 676 19.5 : 6.6 mid. gr. (P & RB) (PS)
678. Inscribed as 676 20 : 6.8 dk. gr. (P & RB) (PS)
679. Inscribed as 676 23.8 : 8.2 mid. gr. (PS)



No. 731



Turned wood opener  
for Codd bottles



No. 634



No. 645

680. Codd. THE DEVONPORT MINERAL WATER CO. (DC)  
and DMWCO on neck 21.8 : 6.8 mid. gr. (P)
681. As 680 but 21.7 : 6.8 pa. bl. (DC)
682. Codd. THE DEVONPORT MINERAL WATER CO. (DC)  
PRIZE MEDAL LONDON 1925 22.9 : 6.6 clear
683. Codd. G. DIXON & SONS LIMITED MALPAS ROAD (DG)  
TRURO 20 : 5.8 pa. gr. (SW Glass Co.)
684. G. DIXON & SONS LTD. TRURO 20.9 : 6.5 pa. gr. (D) (PS)
685. Inscribed as 684. 21 : 6.5 pa. gr. (DG)
686. Codd. W. DUBBIN DEVONPORT 22.4 : 6.7 pa. gr. (DC)  
(Rylands)
687. THIS BOTTLE IS THE PROPERTY OF W. EDDY & (PS)  
SONS PENZANCE PLEASE RETURN WHEN EMPTY  
21.2 : 6 clear (E/FGC)  
Appear in Directories as Mineral Water Manufacturers 1883-1935,  
as William Eddy jnr. in 1873
688. Codd. ELLIS & SON LIMITED HAYLE 22.2 : 6.7 pa. gr. (PS)  
(SW Glass Co.)  
Brewers and mineral water manufacturers : the family name in  
Directories, under Hayle, 1856-1930
689. ELLIS HAYLE 18.5 : 7 mid. gr. (P & RB) (DG)
690. Inscribed as 689 18.5 : 7 mid. gr. (PS)
691. Inscribed as 689 19.4 : 6.7 mid. gr. (PS)
692. Inscribed as 689 24 : 8.2 mid. gr. internal screw (PS)
693. Inscribed as 689 25.2 : 7.7 mid. gr. (UKG/H) (PS)
694. Inscribed as 689 22 : 6.4 mid. br. (CTG) (PS)
695. C. ELLIS & SON LIMITED HAYLE 19.2 : 5.4 clear (PS)  
(CTG)
696. Hamilton. GEAKE BROS LATE J.S. EYRE & CO. (PS)  
LAUNCESTON ESTAB<sup>d</sup> 1830 19.1 : 6 pa. gr.  
The name of Jonathan Symes Eyre & Co., Castle Dyke, mineral  
water manufacturers, appears in Directories 1856-1935, that of  
Geake Bros. (late J.S. Eyre & Co.) in 1889, and as Geake Bros.,  
Castle Dyke 1889-1906
697. Hamilton. J.S. EYRE & CO. LAUNCESTON 17.6 : 6.2 (PS)  
pa. gr.
698. Flat Hamilton. J.S. EYRE & CO. LAUNCESTON (sand (JW)  
blasted) 23.2 : 6.2 pa. gr. with original printed Ginger Ale  
label
699. Codd. GEAKE BROS. J.S. EYRE & CO. LAUNCESTON (Launceston)  
18.3 : 6.1 pa. gr. sealed with original contents intact.  
Soda water
700. Codd. GEAKE BROS. LATE J.S. EYRE & CO (PS)  
LAUNCESTON 22.3 : 6.6 pa. gr. (Cannington)
701. Codd. as 700. 22.2 : 6.5 pa. gr. (Cannington) (CH)
702. Codd. as 700 22.4 : 6.8 pa. gr. (Cannington) (DG)
703. THIS BOTTLE IS THE PROPERTY OF GEAKE BROS. (DG)  
LAUNCESTON 20 : 6.9 mid. gr. (CS & Co. Ltd.)
704. FAIRWEATHERS AERATED WATERS CALLINGTON (DC)  
20 : 6.8 pa. gr.
705. Codd. R. FINNIE CAMPBELLTOWN ARGYLLSHIRE (DC)  
22.5 : 6.5 pa. gr. (Cooper)
706. Codd. FURGUSON KING GARDENS PLYMOUTH (DC)  
23.2 : 6.4 pa. gr. (Redfearn)
707. Codd. FURGUSON KING GARDENS PLYMOUTH (CH)  
RETURN WHEN EMPTY 22.9 : 6.5 pa. gr. (Cannington)

708. Codd. E. GIBBENS PLYMOUTH 22.2 : 6.8 pa. gr. (C)  
(Powell Bristol) with opener
709. Codd. inscribed as 708 22.5 : 6.7 pa. gr. (Rylands) (DC)
710. Codd. GOLDSWORTHY & CO. AERATED WATER (DG)  
WORKS CARHARRACK 22.8 : 6.7 pa. gr. (Turner)  
Mineral water manufacturer in Directory of 1873
711. Codd. GUNN & SONS OKEHAMPTON 23.5 : 6.3 pa. gr. (S)  
(SWG Co.)
712. Codd. GROVES & WHITNALL LTD. SALFORD (CH)  
22.3 : 6.5 amber. (Redfearn)
713. Hammond. W. HANCOCK & SONS WIVELISCOMBE (DG)  
24 : 7.3 pa. gr.
714. Codd. M. HARRIS LIMITED CAMELFORD AERATED (PS)  
WATER WORKS 22.2 : 6.5 pa. gr. (Riley)  
Mineral water manufacturer in Directory of 1906
715. Codd. W.H. HARRIS & SON PLYMOUTH 22.7 : 6.7 (DC)  
pa. gr. (Cannington)
716. Codd. HAWKES & SHEPHEARD NEWTON ABBOT 22.8 : (Miss T. Brown)  
22.8 : 6.6 pa. gr. (Redfearn)
717. Flat Hammond W. HICKS ST. AUSTELL 21.2 : 7.2 pa. gr. (PS)  
The sign of the St. Austell Brewery is still a familiar one
718. Codd. HICKS ST. AUSTELL 18.9 : 5.8 pa. gr. (SWG Co.)
719. Codd. HICKS ST. AUSTELL 21.9 : 6.8 pa. gr. (SWG Co.) (PS)
720. Codd. HICKS ST. AUSTELL 22.2 : 6.3 pa. gr. (Rylands) (CH)
721. W. HICKS & CO. LTD. ST. AUSTELL 20.3 : 6.8 pa. gr. (PS)  
(SWG Co.) with internal screw
722. W. HICKS & CO. LTD. ST. AUSTELL 19.7 : 6.7 gr. (DG)  
½ pint (P & RB)
723. W. HICKS & CO. LTD. ST. AUSTELL 20.1 : 6.2 gr. (PS)  
½ pint
724. W. HICKS & CO. LTD. ST. AUSTELL 20.2 : 6.3 gr. (PS)  
½ pint (P & RB) with internal screw
725. HICKS ST. AUSTELL 21 : 6.3 gr. ½ pint (P & RB) (PS)
726. W. HICKS ST. AUSTELL NANKIVELL & CO. TRURO (DG)  
19.6 : 6.6 dk. gr. (P & RB)
727. W. HICKS & CO. LTD. ST. AUSTELL 25.2 : 7.3 gr. (PS)  
(P & RB) with internal screw
728. W. HICKS & CO. LTD. ST. AUSTELL 25.8 : 7.2 gr. (PS)  
1 pint (P & RB)
729. W. HICKS & CO. LTD. ST. AUSTELL 25.4 : 7.5 gr. (PS)  
1 pint (P & RB)
730. 25 : 8.5 br. 1 pint (UGB) with paper label – Walter (PS)  
Hicks Centenary Ale (1851-1951)
731. Flat Hammond HUXTABLE LIMITED NEWQUAY (DG)  
17 : 6 pa. gr. (Barnet & Foster)  
Mineral Water Manufacturer in Directories of 1902 and 1906
732. WM HUXTABLE LTD. NEWQUAY 26.5 : 7.5 gr. (PS)  
1 pint (Cannington) with internal screw
733. Codd. F.J. IRONS WADEBRIDGE 22.7 : 6.7 pa. gr. (PS)  
(Cannington)
734. Codd. F.J. IRONS WADEBRIDGE 22.7 : 6.6 pa. gr. (Plymouth)  
(Cannington) sealed with original contents
735. Codd. J. JENKINSON LIMITED LEITH 22.7 : 6.5 pa. gr. (DC)
736. Flat Hammond W.H. JENKINS & CO. TRURO 19.8 : 6.8 (PS)  
pa. gr.

737. Codd. JORY & SONS CARHARRACK 22.5 : 6.8 pa. gr. (JW)  
(Patent Safe Groove Sole Maker Dan Rylands Barnsley)  
Mineral Water Manufacturers in Directories 1893-1935
738. Codd. LAMONTS PATENT J. LAMONT MAKER (DG)  
GLASGOW 24 : 6 pa. gr. (a traveller's sample?)
739. Codd. A. LAWRY ALBASTON 23 : 6.5 pa. gr. (Rylands) (DC)  
Alboston in Gunnislake, Cornwall
740. Codd. W.H. MALLETT & CO. TRURO 23.3 : 6.7 pa. gr. (DG)  
(P & RB)
741. W.H. MALLETT & CO. TRURO 18.5 : 7 dk. gr. ½ pint (PS)  
(P & RB)
742. Codd. MARTIN & SONS FALMOUTH 20.9 : 6.7 pa. gr. (DG)  
(Patent Safe Groove Sole Maker Dan Reynolds Barnsley)
743. MARTIN & SONS FALMOUTH 21 : 6 pa. gr. with (PS)  
internal screw
744. As 743.
745. Codd. ISAAC MAXWELL WHITEHAVEN THIS BOTTLE (DG)  
IS THE PROPERTY OF ISAAC MAXWELL 22 : 6.6 pa. gr.  
(Cannington)
746. W. MEDLYN CAMBORNE 20.6 : 6.5 dk. gr. (C.B. & Co.) (PS)  
with internal screw
747. MICHELL & MICHELL ST. AUSTELL AERATED (DG)  
WATER MANUFACTURER. F.B. MICHELL PATENTEE  
ST. AUSTELL 23.1 : 6.7 pa. gr. (BBW Co. Ltd. Shirehampton)
748. Codd. CHACEWATER BREWERY CO. 18.7 : 7.5 pa. gr. (DG)  
Under the name of Chacewater Brewery Co. appears in Directories  
1910-1919 but previously Gradwell & Co. and Moyle & Co.
749. C. MOYLE & SON AERATED WATER MANUFRS (DG)  
CHACEWATER 22.5 : 6.3 pa. gr. (Sutcliffe's Patent  
Barnsley). In Directory of 1883
750. CHACEWATER BREWERY CO. 19.6 : 6.9 dk. gr. (Anon)  
(P & RB)
751. Hammond. NANKIVELL & CO. TRURO 18.7 : 5.9 pa. gr. (MB)
752. NANKIVELL & CO. TRURO 20.7 : 7.9 dk. gr. (P & RB) (DG)
753. Codd. PELLOW BROS BODMIN 22.5 : 6.5 pa. gr. (CH)  
(SWG Co.)  
Mineral water manufacturer in Directory of 1923
754. Codd. R. PENROSE REDRUTH 22.6 : 6.5 pa. gr. (DG)  
Appears as Richard Penrose of Barncoose, mineral water  
manufacturer, in Directories 1889-1902
755. Codd. MATTHEW POMFRET LIMITED ALBION (CH)  
WORKS BURY 18.5 : 5.5 pa. gr. (Codd's Patent Rylands  
& Codd Makers Stairfoot Barnsley)
756. Codd. RANDALL BROS EPSOM & ADDLESTONE (DG)  
21.5 : 6.8 pa. gr. (Reliance Patent. Sole Maker Dan Rylands  
Barnsley)
757. Codd. REDRUTH BREWERY COMPANY LIMITED (PS)  
19.2 : 5.5 pa. gr. (Cannington)  
Appears under this name in Directories 1893-1939 but of earlier  
origin and continues in business under the Devenish umbrella
758. Flat Hamilton. MAGOR DAVEY & CO. WEST OF (DG)  
ENGLAND AERATED WATERS THE BREWERY  
REDRUTH 22.3 : 6 pa. gr.
759. STOLEN FROM WEST OF ENGLAND REDRUTH (PS)  
BREWERY COMPANY'S AERATED WATERS 21.9 : 6.2  
clear

760. WEST OF ENGLAND REDRUTH BREWERY (DG)  
COMPANY'S AERATED WATERS 22.2 : 6.1 pa. gr. (P & RB)
761. REDRUTH BREWERY COMPANY LIMITED 19.7 : 5.7 (PS)  
clear (CTG)
762. REDRUTH BREWERY COMPANY LIMITED 19.1 : 5.2 (DG)  
p. gr. (UGB)
763. Inscribed as 762. 22 : 6.2 pa. gr. (UGB) (PS)
764. Inscribed as 762. 22 : 6.2 pa. gr. (DG)
765. Inscribed as 762. 19.8 : 7 gr. (PS)
766. REDRUTH BREWERY COY'S CORNISH ALE (PS)  
19.9 : 7.5 gr. with the figure of 'Ruth'
767. Inscribed as 762 18 : 6.8 mid. br. (CTG) (DG)
768. Inscribed as 762 20 : 6.3 mid. br. (CTG) (PS)
769. Inscribed as 762 21.1 : 6 gr. (Cannington) (PS)
770. Inscribed as 762 20.1 : 6.2 gr. (P & RB) (PS)
771. Inscribed as 762 22.3 7 gr. (PS)
772. Inscribed as 762 25.5 : 7.5 gr. (UKG) (PS)
773. Inscribed as 762 24.1 : 8 gr. (P & RB) (PS)
774. Plain but with named stopper: on base RBC (PS)  
25.7 : 7.2 br.
775. Inscribed as 762 20 : 9.4 br. (CTG) (PS)
776. J. RETALLICK AERATED WATERS MANUFACTURER (CH)  
ST. BLAZEY 21.5 : 6.5 pa. gr. (Sutcliffe's Patent 74 Port  
Street, Manchester)
777. J.P. ROBERTS AERATED WATERS CALLINGTON (PS)  
22.2 : 6 pa. gr.  
Mineral Water Manufacturer in Directory of 1883
778. SCHOLES ROSTRON BLACKBURN THIS IS THE (CH)  
PROPERTY OF S. ROSTRON. TO BE RETURNED WHEN  
EMPTY 18 : 5.6 pa. gr. (N & Co.) with internal screw
779. D. ROLINSON BODMIN 19.4 : 7 dk. gr. (P & RB) (PS)
780. I. ROWLING & SONS AERATED WATER (PS)  
MANUFACTURERS CAMBORNE 21 : 6.3 pa. gr. (SWG Co.)  
with internal screw
781. SANDOE & SON BODMIN 19.1 : 7.1 dk. gr. (PS)
782. Inscribed as 781 24.2 : 7.7 mid. gr. (P & RB) (PS)
783. Inscribed as 781 24.6 : 7.6 mid. gr. (Powell Bristol) (PS)
784. Flat Hamilton. SCHWEPPEs 18 : 6.2 pa. gr. (DG)
785. Flat Hamilton. SCHWEPPEs BY APPOINTMENT (DG)  
(with Royal Arms) 21.5 : 7.1 pa. gr.
786. Flat Hamilton. SCHWEPPEs BY APPOINTMENT TO THE (CH)  
KING AND PRINCE OF WALES 21.3 : 7.2 pa. gr.
787. Flat Hamilton. SCHWEPPEs (with Royal Arms) 20.9 : 7.5 (CH)  
pa. gr.
788. Hamilton. C.H. SKINNER EXETER 17.8 : 6 pa. gr. (B.Brown Esq.)  
Found in the River Fowey : contains a fully-grown  
bi-valve mollusc
789. SKINNER EXETER 17 : 5.2 pa. gr. (CH)
790. Codd. SLEEMAN & CO. HELSTON 18.7 : 5.7 pa. gr. (PS)  
(P & RB)
791. SLEEMAN & CO. HELSTON 18.4 : 7 gr. (P & RB) (PS)
792. Codd. SOUTH HAMS MINERAL WATER CO. NEW- (DC)  
QUAY KINGSBRIDGE 23.8 : 6.5 (Powell Bristol)
793. DR STRUVES MINERAL WATERS 14.4 : 7 mid. gr. (DG)



794. Codd. GORDON TAMBLYN LATE J. ROWE ICE (PS)  
WORKS GULVAL PENZANCE 22.3 : 6.3 clear (PBB)  
John Rowe in Directories of 1883-9, Rowe & Son 1914-23, Gordon  
Tamblyn 1926-30
795. Codd. THOMAS & EVANS LTD. PORTH 23.5 : 6.5 pa. gr. (CH)  
(SWG Co.)
796. P.H. TONKIN LTD. TRURO OPEN WITH A COIN (PS)  
18.9 : 5.5 mid. br. (UGB)
797. Inscribed as 796 18.9 : 5.5 mid. br. (UGB) (PS)
798. Inscribed as 796 22.9 : 6.2 clear (UGB) (DG)
799. Inscribed as 796 18 : 6.7 mid. br. (UGB) (PS)
800. Inscribed as 796 18 : 6.7 pa. gr. (UGB) (PS)
801. Inscribed as 796 18 : 6.7 mid. br. (UGB) (DG)
802. Inscribed as 796 28 : 8.2 clear (FGC) with internal screw (PS)
803. Inscribed as 796 28.1 : 7.9 pa. gr. (UGB) (PS)
804. Codd. W. TREAIS NIAGARA HOUSE CALLINGTON (CH)  
18.7 : 5.2 pa. gr. (SWG Co.)  
William Treais, Mineral Water Manufacturer in Directories 1889-1902
805. TRELUSWELL BREWERY CO. PENRYN 20.8 : 6.2 (PS)  
mid. gr. with internal screw
806. Inscribed as 805 21.1 : 6.4 mid. gr. with internal (PS)  
screw
807. Inscribed as 805 21.1 : 6 mid. gr. (Cannington) with (PS)  
internal screw
808. THIS BOTTLE IS THE PROPERTY OF TRELUSWELL (DG)  
BREWERY CO. PENRYN CORNWALL 21.1 : 6.9 dk. gr.  
with internal screw
809. Inscribed as 808 22.6 : 6.6 dk. gr. (PS)
810. J. TUCKER & SON PURE MINERAL WATERS estd. (DG)  
1898 ST. IVES 21.5 : 6.1 pa. gr.  
John Tucker, Mineral Water Manufacturer, in Directories 1902-35
811. TRURO AGENCY 21 : 6.5 gr. (Breffit's Makers London) (PS)  
with internal screw
812. TRURO AGENCY 25.4 : 7.5 gr. (Breffit's Makers London) (PS)  
with internal screw  
An Agency of the Redruth Brewery Co.
813. THE TYWARDREATH AERATED & MINERAL (PS)  
WATER CO. LTD (sand-blasted) 18.1 : 6.7 mid. gr. with  
internal screw  
Mineral Water Manufacturers in Directories of 1893-1919
814. TYWARDREATH AERATED & MINERAL WATER CO. (PS)  
LTD. 20.3 : 6.1 mid. gr. with internal screw
815. TYWARDREATH HOP BITTERS 21 : 6.2 mid. gr. (PS)  
(JL & Co.)
816. Codd. FR. VAUGHAN & CO. MINERAL WATER (D.G.Vosper  
WATER MANUFACTURERS SALTASH 23.3 : 6.7 pa. gr. Esq.)  
pa. gr. (Reliance Patent Sole Maker Dan Rylands Barnsley)
817. D. VENNING & SON LISKEARD 18.7 : 7 dk. gr. (P & RB) (PS)  
(P & RB)
818. Inscribed as 817 18.3 : 6.9 dk. gr. (P & RB) (DG)
819. Inscribed as 817 2-.6 : 6.5 pa. gr. (UGB) (DG)
820. WEST CORNWALL AERATED WATER COMPANY (Mrs.Steptoec)  
CAMBORNE 21.8 : 6.1 pa. gr.
821. R.W. & S. L<sup>d</sup> WHITE 20.5 : 6.5 mid. gr. internal screw (DG)

822. R. WHITE  $\frac{1}{4}$ d DEPOSIT CHARGED ON THIS BOTTLE  
internal screw
823. THE PROPERTY OF R. WHITE LONDON NO DEPOSIT (DG)  
CHARGED 27.6 : 7 dk. gr. (Rylands)
824. Codd. R. WILLIAMS & CO. TAVISTOCK (DC)  
(P & RB)
825. Codd. YACHT BEVERAGE CO. 22 : 6.6 pa. gr. (CH)
826. Flat Hamilton. YACHT EXETER 17.5 : 5.9 pa. gr. (DG)
827. YACHT EXETER 21 : 6 pa. gr. (DG)
828. YACHT EXETER 18.2 : 6.5 mid. br. (FGC) (DG)
829. VICTORIA DRAUGHT BITTER. This is an Australian (S)  
"Darwin stubby", capacity 80 fluid ounces. The label is  
enamelled and fired
830. Spirit flask. THOMAS BEARE TRURO 17.5 : 10.6 x 4 (DG)  
pa. gr.
831. As 830 17.4 : 10.7 x 4 pa. gr. (Lt. Cdr.  
Verney)
832. As 830 14 : 8.3 x 3 pa. gr. (DG)
833. Spirit flask. 16.6 : 8.7 x 2 pa. gr. (DG)
834. Wine bottle. CARNE FALMOUTH & TRURO 28.5 : 8.4 (DG)  
pa. gr.
835. CARNE HELSTON oval 29.6 : 11.1 x 7.3 pa. gr. (PS)
836. THE KEYSTONE CO. REGD. BRISTOL 26 : 7.5 pa. gr. (DG)
837. PLJ in monogram 29.7 : 8 pa. gr. (DG)
838. THE MAGNUM REG<sup>d</sup> TRADE MARK LONDON SE (DG)  
22.6 : 7.2 mid. gr. internal screw
839. MISSISQUOI SPRINGS : with figure of Red Indian (MP)  
squaw and papoose 24.5 : 9.5 mid. gr.
840. LUXARDOZARA 1821 33.2 : 5.9 pa. gr. This is a modern (CH)  
Austrian liqueur bottle retaining the use of the seal
841. EMU WINE BY APPOINTMENT TO H.M. THE KING (DG)  
13 : 9.9 x 4.6 mid. br.
842. W. & A. GILBEY L<sup>d</sup> (under base) 17.5 : 13.5 x 9.5 pa. br. (DG)
843. Wine bottle. W. & A. GILBEY (in script) 30.5 : 8 pa. bl. (DG)
844. IMPERIAL PINT & HALF/Patent Office Design Registry (F.W. May Esq.)  
mark 33.3 : 8.3 dk. br. c.1870

The mark indicates that the design of the bottle was granted  
copyright protection for three years following the date of  
registration

## THE ENGLISH GLASS BOTTLE THROUGH THE AGES

To commemorate the exhibition The Royal Institution of Cornwall has produced a specially-designed glass paperweight surmounted by a seal inscribed BOTTLE EXHIBITION TRURO 1976.

Only one hundred and fifty of the paperweights have been made by Liskeard Glass Ltd., Liskeard, Cornwall, and each will be supplied boxed and with a numbered certificate. The price is £6.00 each. Postage and packing: inland or overseas (surface mail) 70p.

OBTAINABLE ONLY FROM THE MUSEUM.